

Hillcrest Sport

IDENTITY
SERIES

4 - 5 BEDROOM
5 BATHROOM
4,414 FINISHED SF



ELEVATION A ■■■■



ELEVATION B ■■■■



ELEVATION C ■■■■



ELEVATION D ■■■■



ELEVATION E ■■■■



ELEVATION F ■■■■



ELEVATION G ■■■■

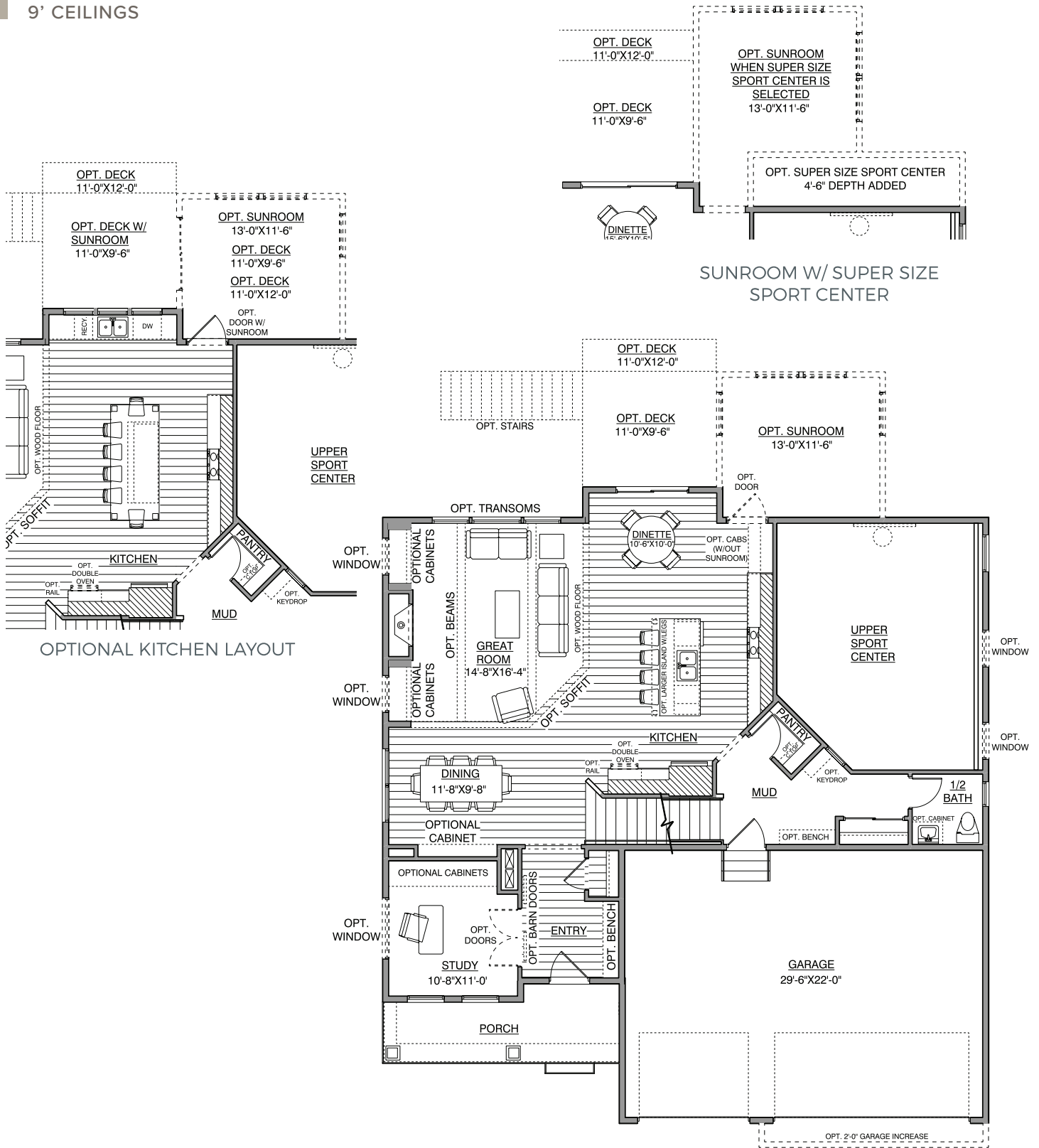


ELEVATION H ■■■■

HANSON
■■■ BUILDERS ■■■

Main Level

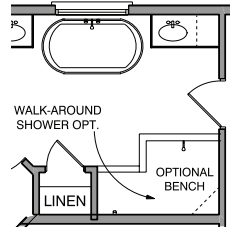
1,291 - 1,461 FINISHED SF
9' CEILINGS



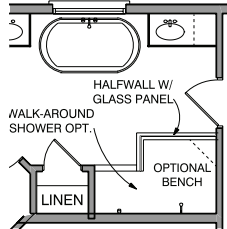
*NOTE: Plan dimensions and square footage numbers are approximate, actual plans may vary slightly.

Upper Level

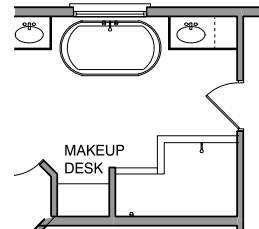
1,710 - 1,838 FINISHED SF
8' CEILINGS



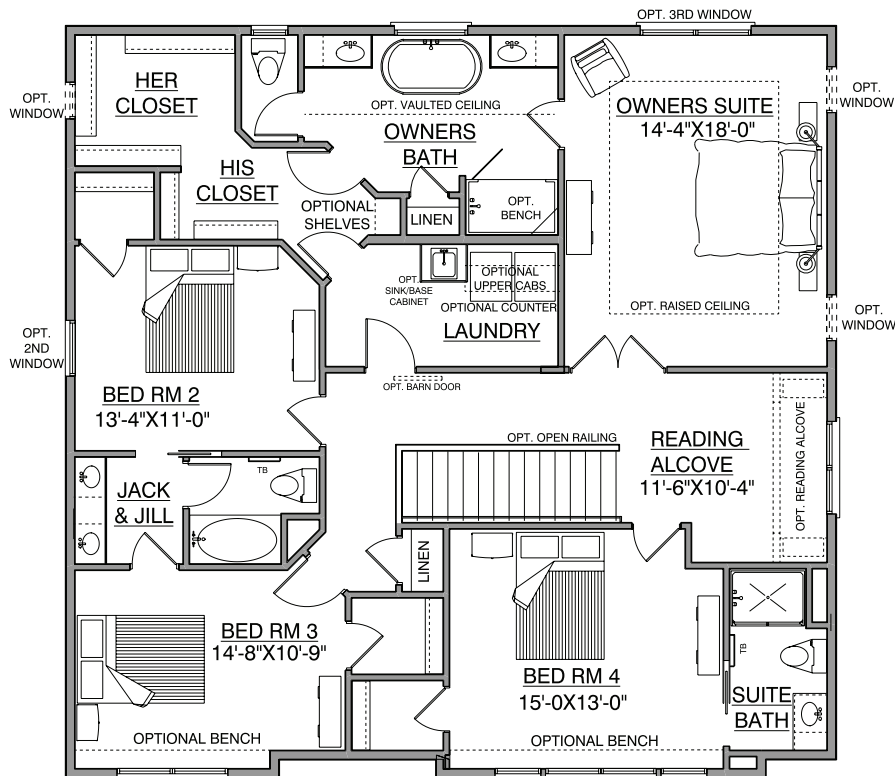
OWNERS SHOWER OPTION 1



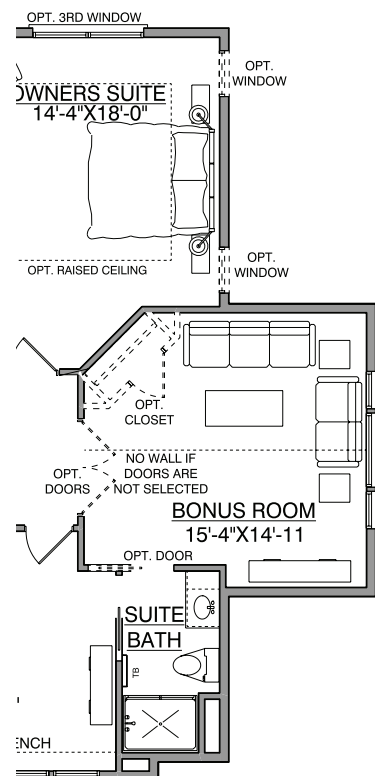
OWNERS SHOWER OPTION 2



OPT. MAKEUP DESK



*UPPER FLOOR VARIES PER ELEVATION



BONUS ROOM OPTION
ADDS 128 SF

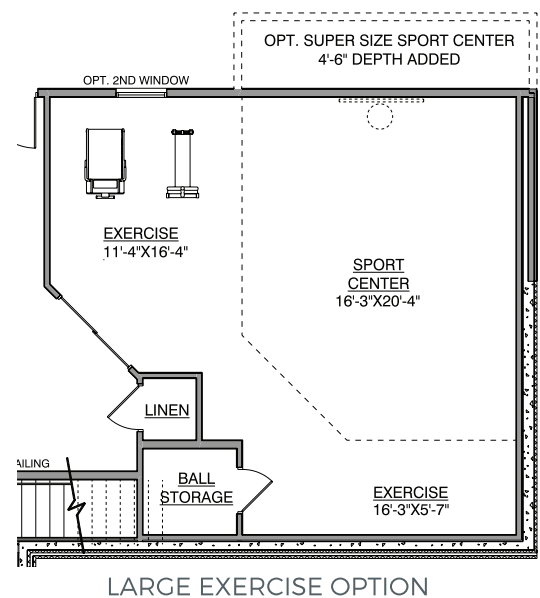
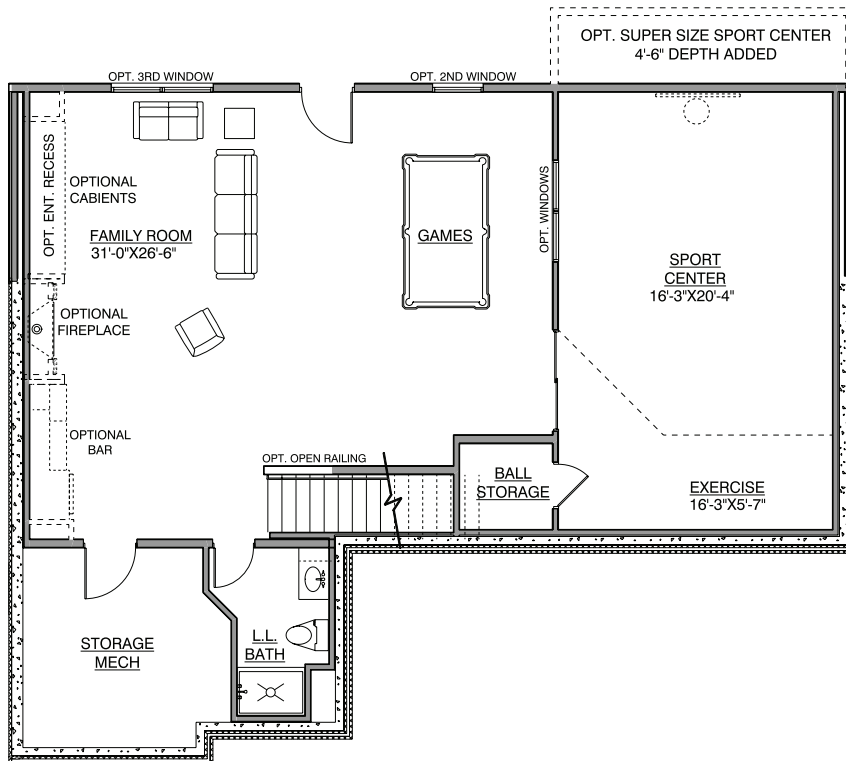
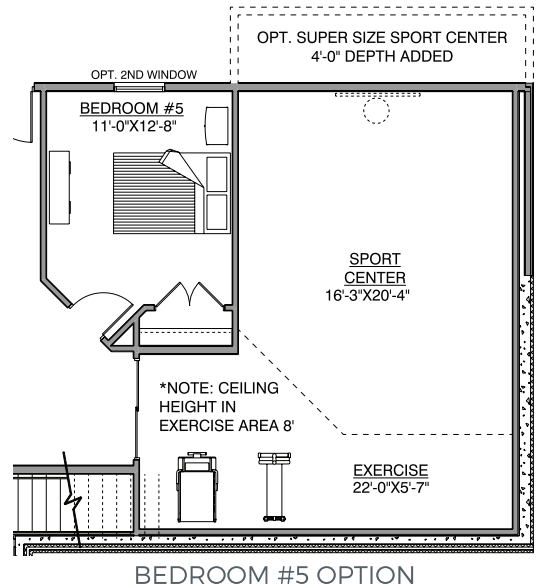
*NOTE: Plan dimensions and square footage numbers are approximate, actual plans may vary slightly.

Lower Level

883 FINISHED SF
530 SPORT CENTER
8' CEILINGS

| | | | |
|------------------------|-------|--------------------|-----|
| Upper: | 1,710 | Garage: | 681 |
| Main: | 1,291 | Unfinished: | 200 |
| Lower: | 883 | | |
| Sport Center: | 530 | | |
| Total Finished: | 4,414 | | |

| | | | |
|------------------------|-----|---------------------|----------|
| Opt. Sunroom: | 170 | | |
| Opt. Bonus: | 128 | | |
| Opt. Sport Add: | 80 | House Width: | 50' - 0" |



UPDATED 10/17/2023

*NOTE: Plan dimensions and square footage numbers are approximate, actual plans may vary slightly.