

Bridgewater Sport

IDENTITY
SERIES

5 - 6 BEDROOM
5 BATHROOM
5,052 - 5,420 FINISHED SF

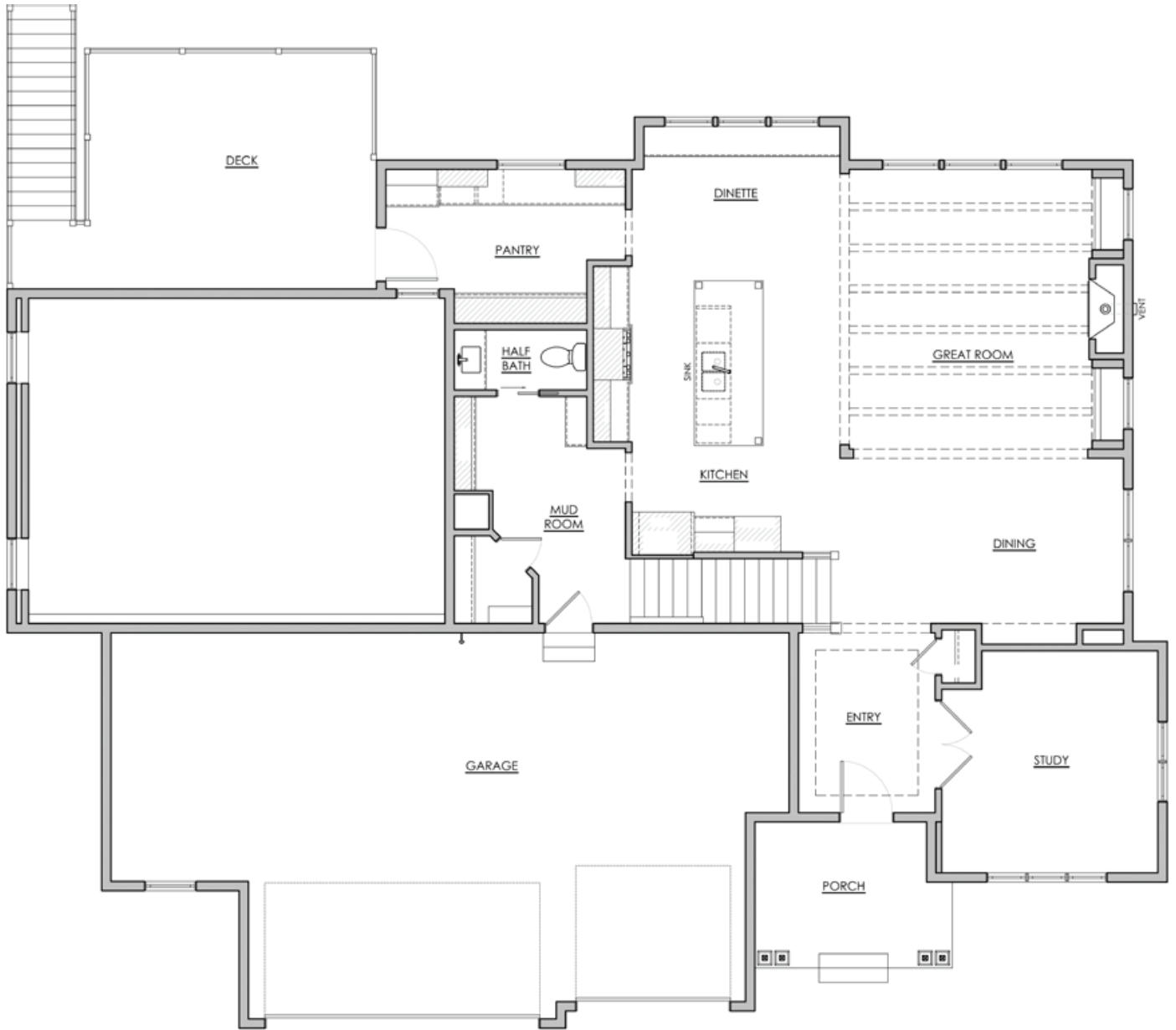


HANSON
■■■ BUILDERS ■■■

Main Level

Bridgewater Sport IDENTITY SERIES

1,453 FINISHED SF
9' CEILINGS

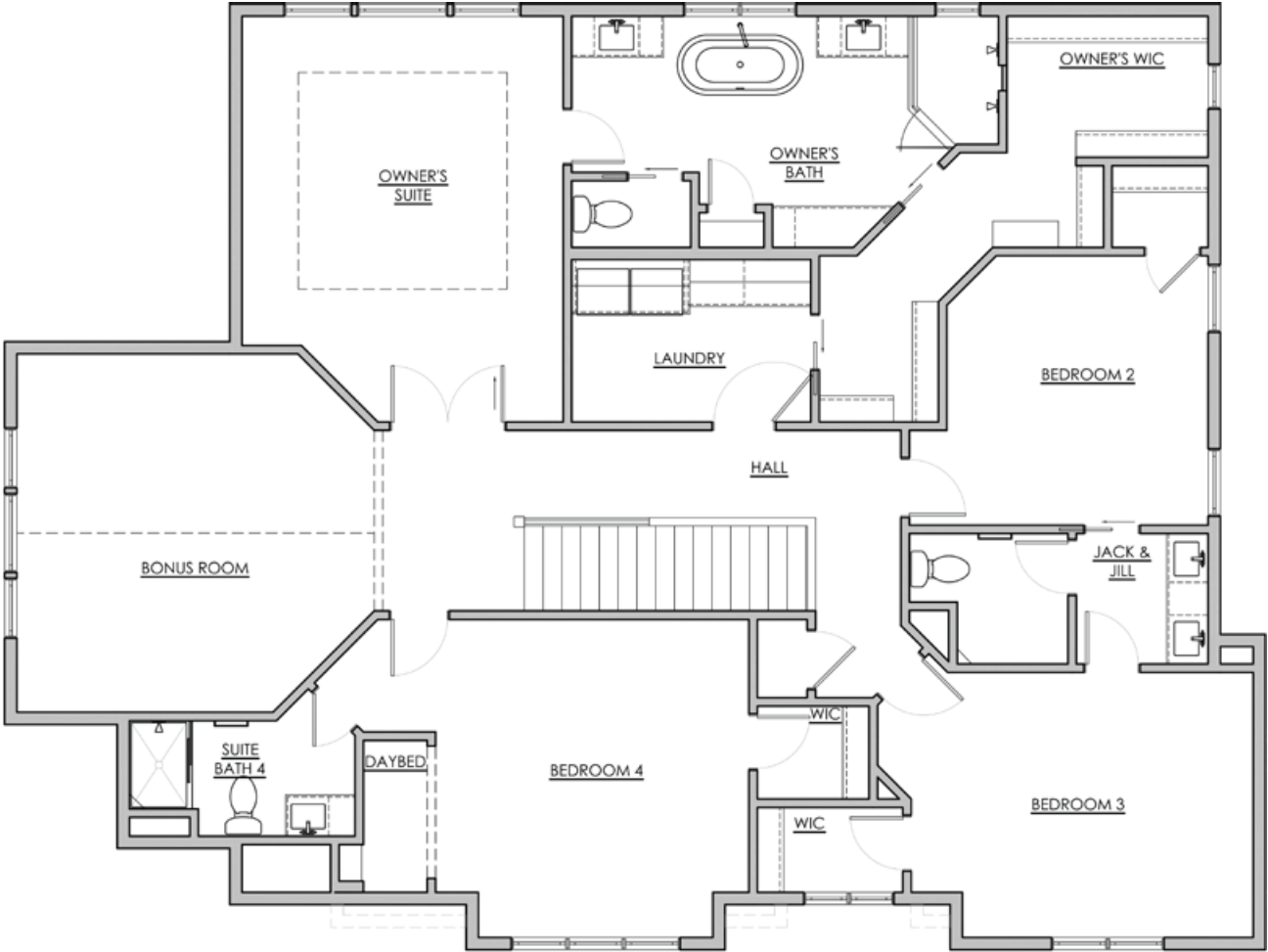


*NOTE: Plan dimensions and square footage numbers are approximate, actual plans may vary slightly.

Upper Level

Bridgewater Sport IDENTITY SERIES

1,835 FINISHED SF
8' CEILINGS

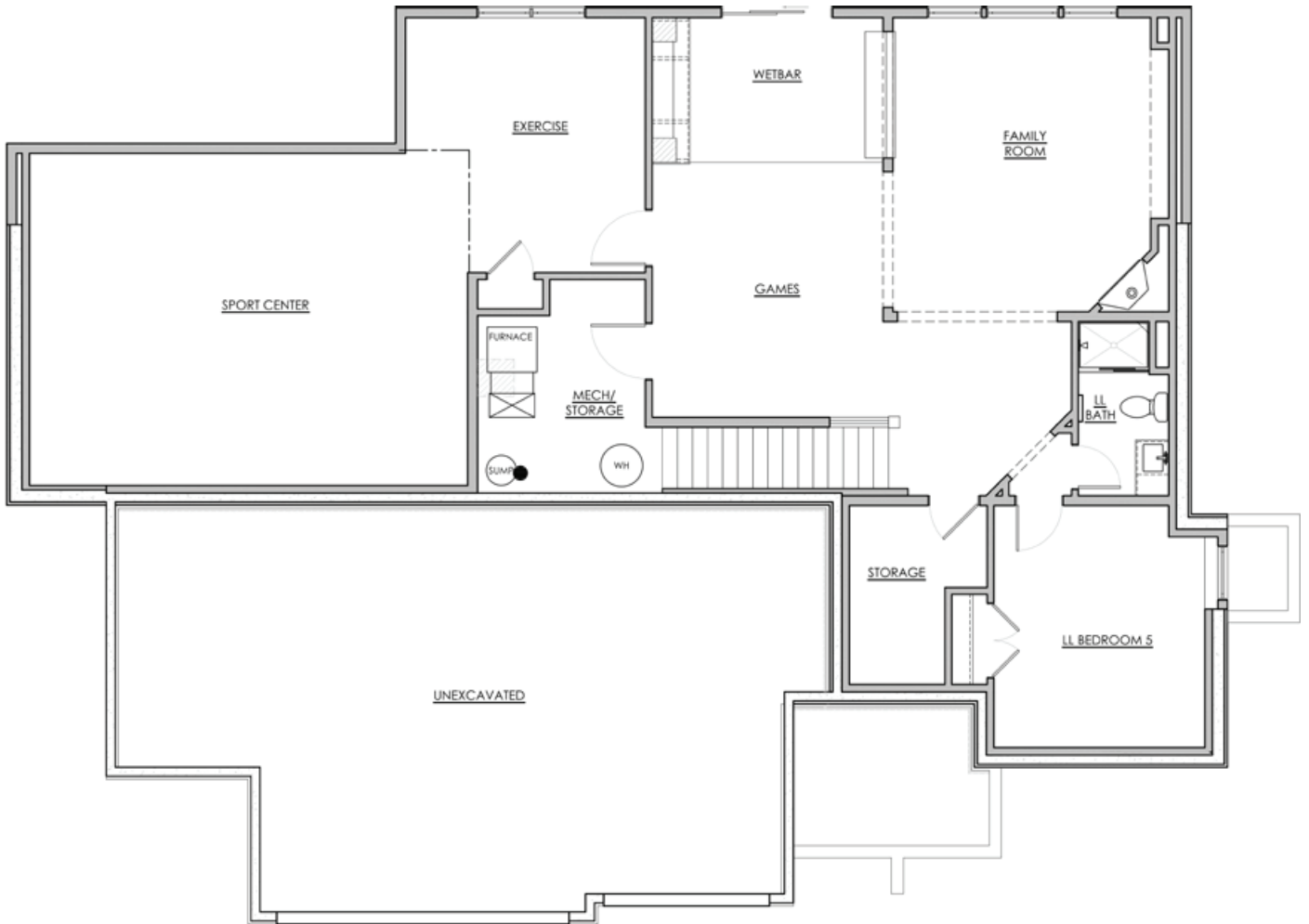


HANSON
■■■ BUILDERS ■■■

*NOTE: Plan dimensions and square footage numbers are approximate, actual plans may vary slightly.

Lower Level

1,062 FINISHED SF
702 SPORT CENTER
8' CEILINGS



Upper:	1,835	Garage:	TBD
Main:	1,453	Unfinished:	166
Lower:	1,062		
Sport Center:	702	House Width:	67' - 6"
Total Finished:	5,052 - 5,420		

Opt. Sunroom:	170		
Opt. Bonus:	198		

UPDATED 8/30/2023

*NOTE: Plan dimensions and square footage numbers are approximate, actual plans may vary slightly.



hansonbuilders.com | 763-286-2509