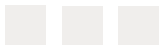


# Sutton Sport

IDENTITY  
SERIES

4 - 6 BEDROOM  
5 BATHROOM  
5,420 - 5,840 FINISHED SF

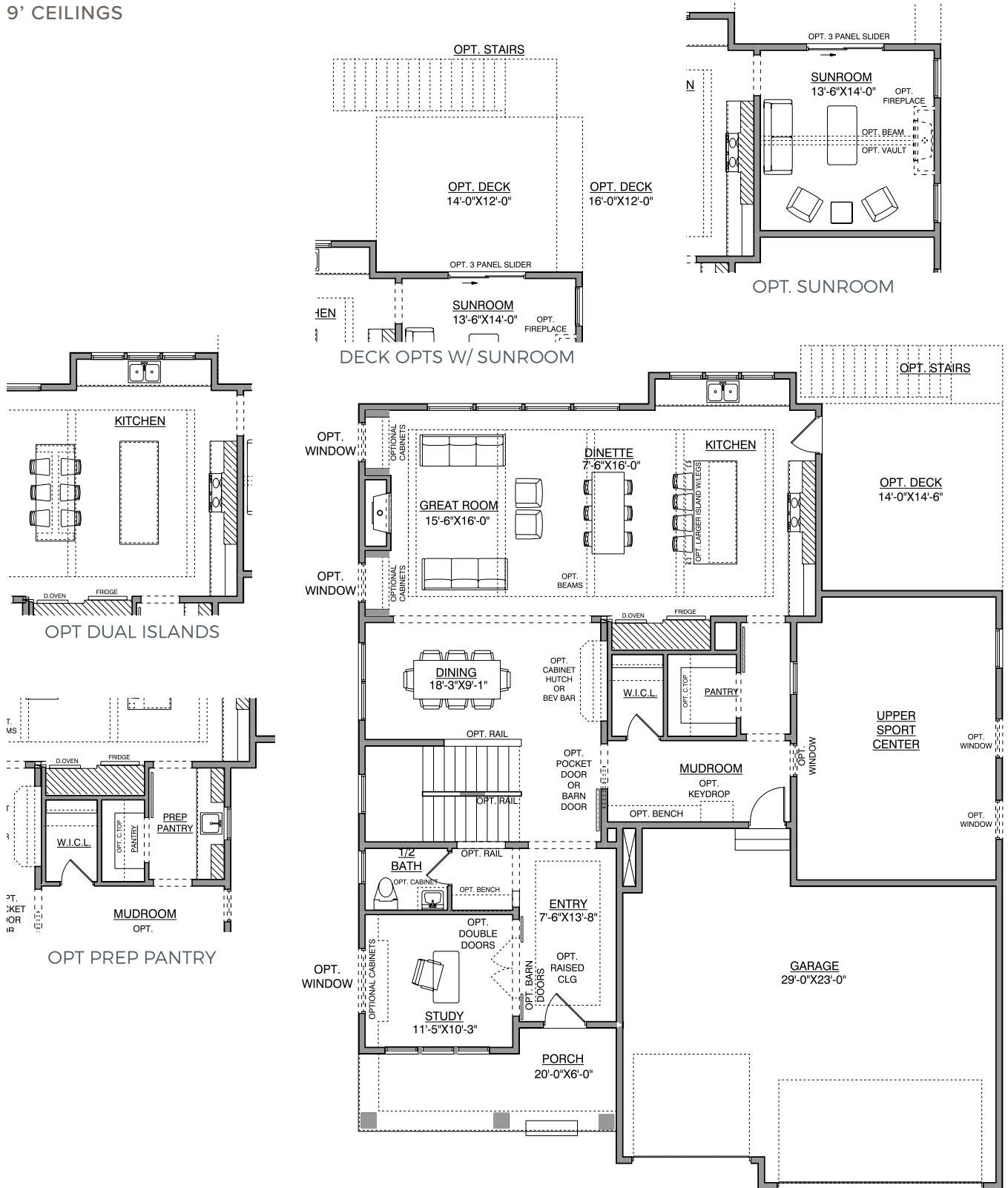


HANSON  
■■■ BUILDERS ■■■

# Main Level

1,527 FINISHED SF  
9' CEILINGS

Sutton Sport IDENTITY SERIES

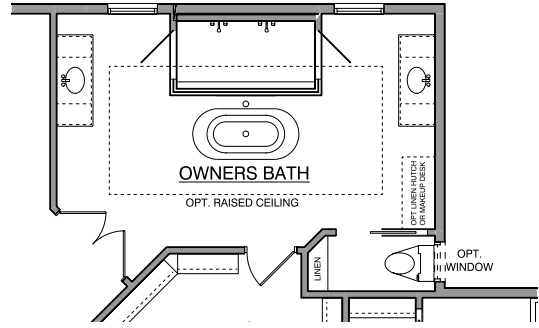


HANSON BUILDERS

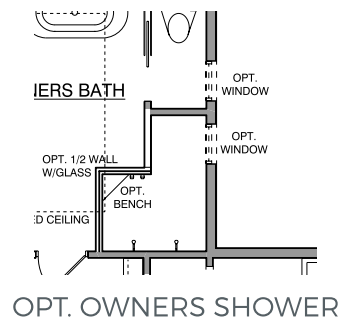
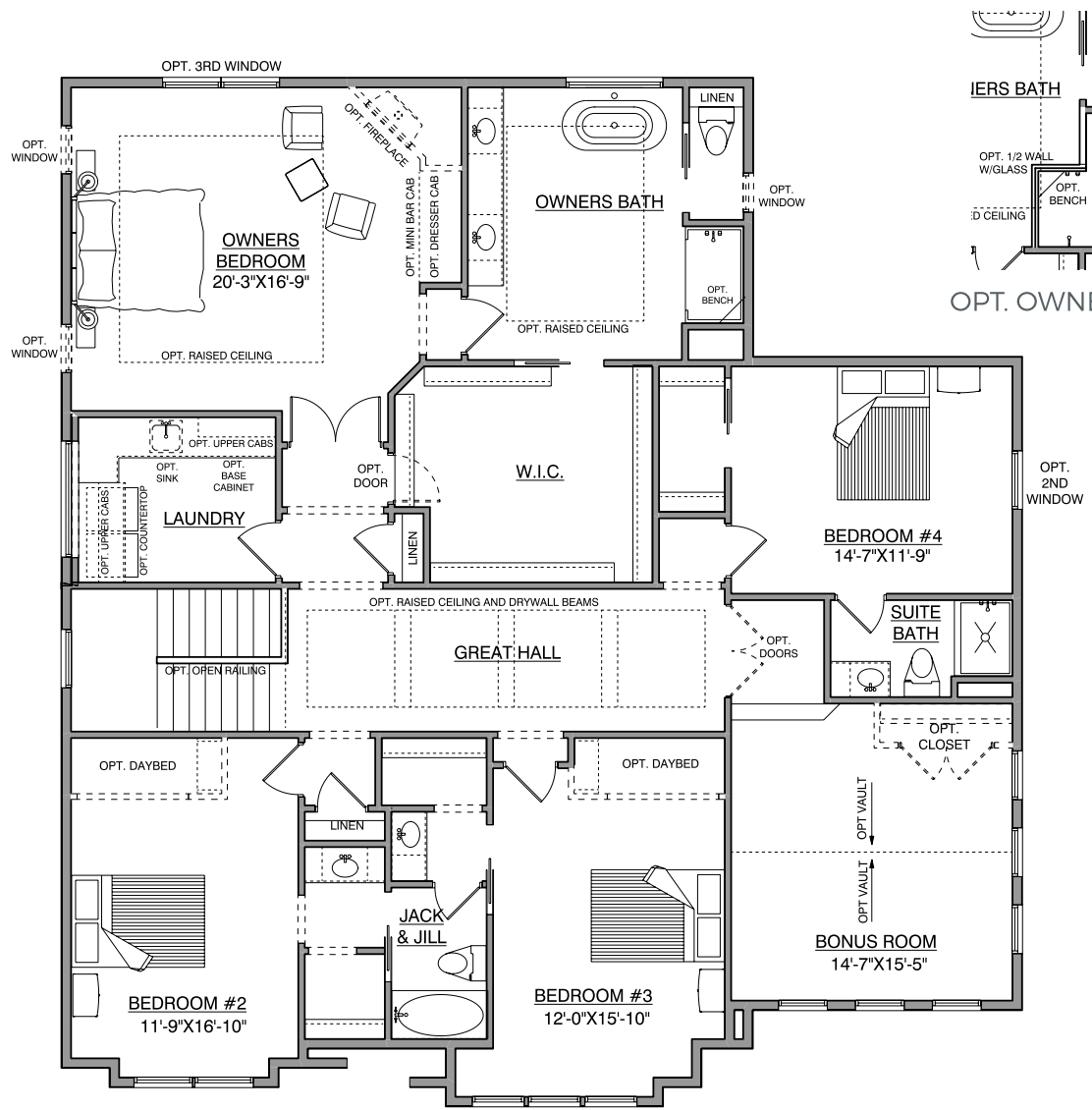
\*NOTE: Plan dimensions and square footage numbers are approximate, actual plans may vary slightly.

# Upper Level

2,353 FINISHED SF  
8' CEILINGS



OPT. OWNERS RETREAT BATH



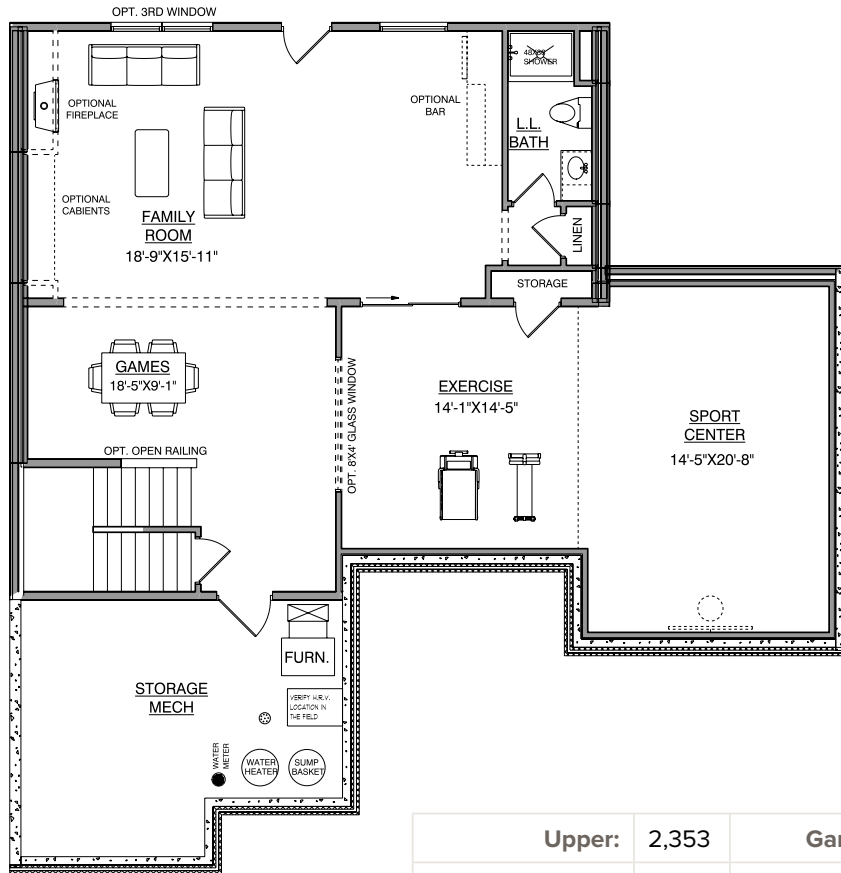
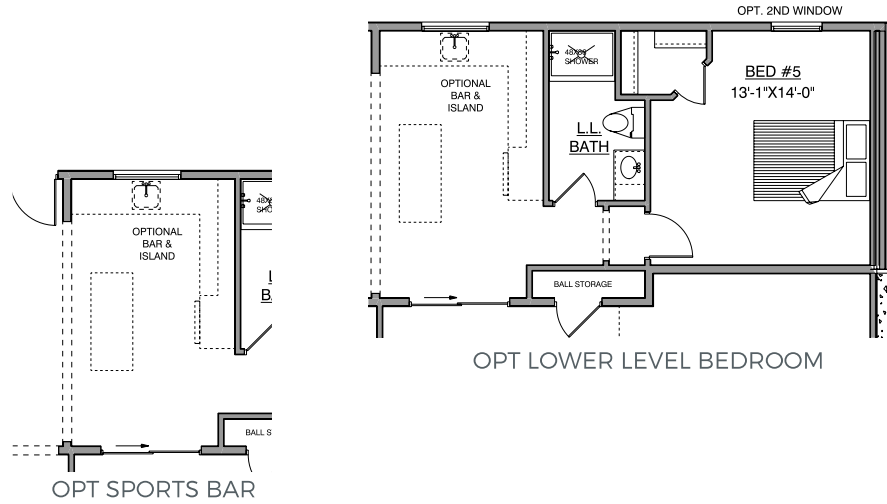
OPT. OWNERS SHOWER

\*UPPER FLOOR VARIES PER ELEVATION

\*NOTE: Plan dimensions and square footage numbers are approximate, actual plans may vary slightly.

# Lower Level

941 FINISHED SF  
599 SPORT CENTER  
8' CEILINGS



UPDATED 9/21/2023  
\*NOTE: Plan dimensions and square footage numbers are approximate, actual plans may vary slightly.

Upper:	2,353	Garage:	735
Main:	1,527	Unfinished:	330
Lower:	941		
Sport Center:	599		
Total Finished:	5,420 - 5,840		

Opt. Sunroom:	210		
Opt. LL Bedroom:	210	House Width:	50' - 0"