

Pinehurst Sport

LEGACY
SERIES

5 BEDROOM
5 BATHROOM
5,029 FINISHED SF

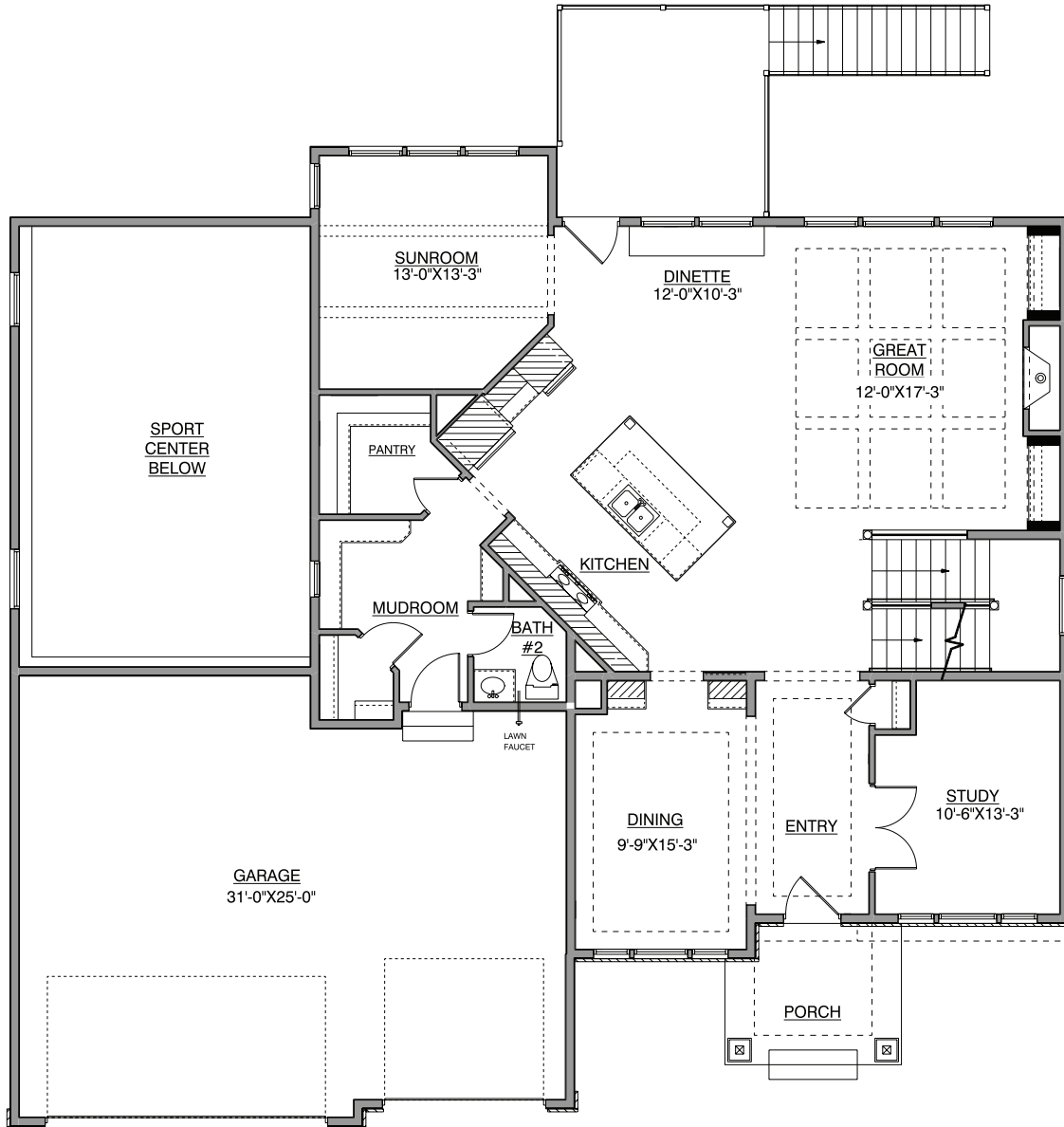


HANSON
■■■ BUILDERS ■■■

Main Level

Pinehurst Sport LEGACY SERIES

1,629 FINISHED SF
9' OR 10' CEILINGS

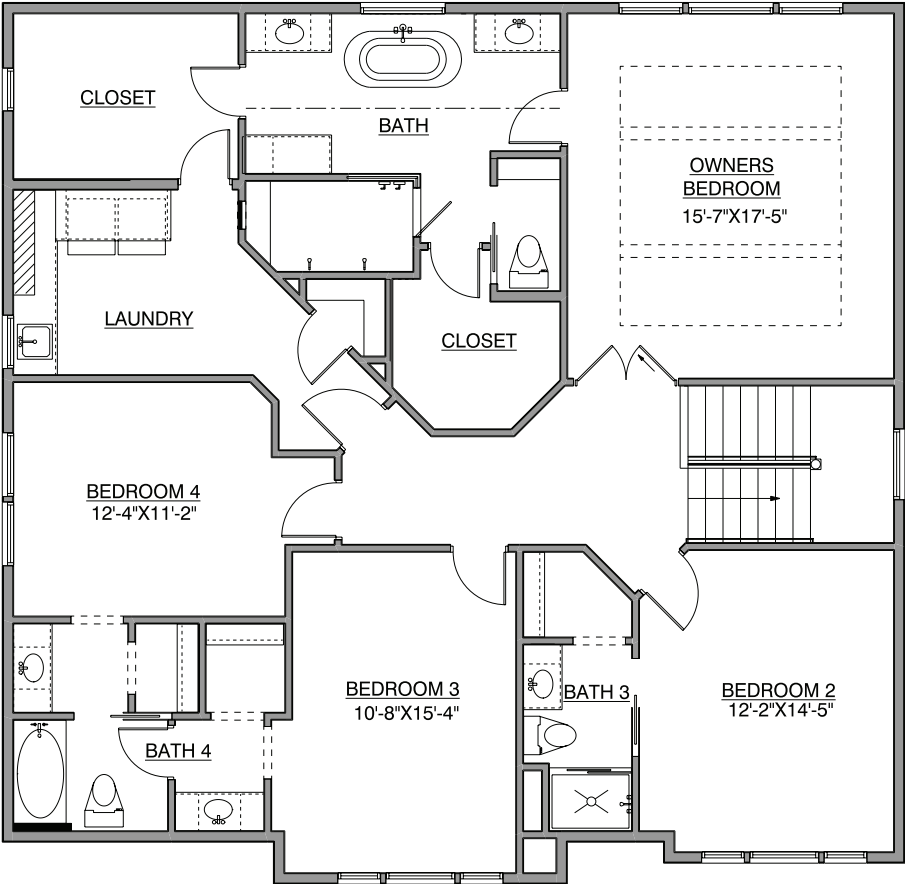


*NOTE: Plan dimensions and square footage numbers are approximate, actual plans may vary slightly.

Upper Level

Pinehurst Sport LEGACY SERIES

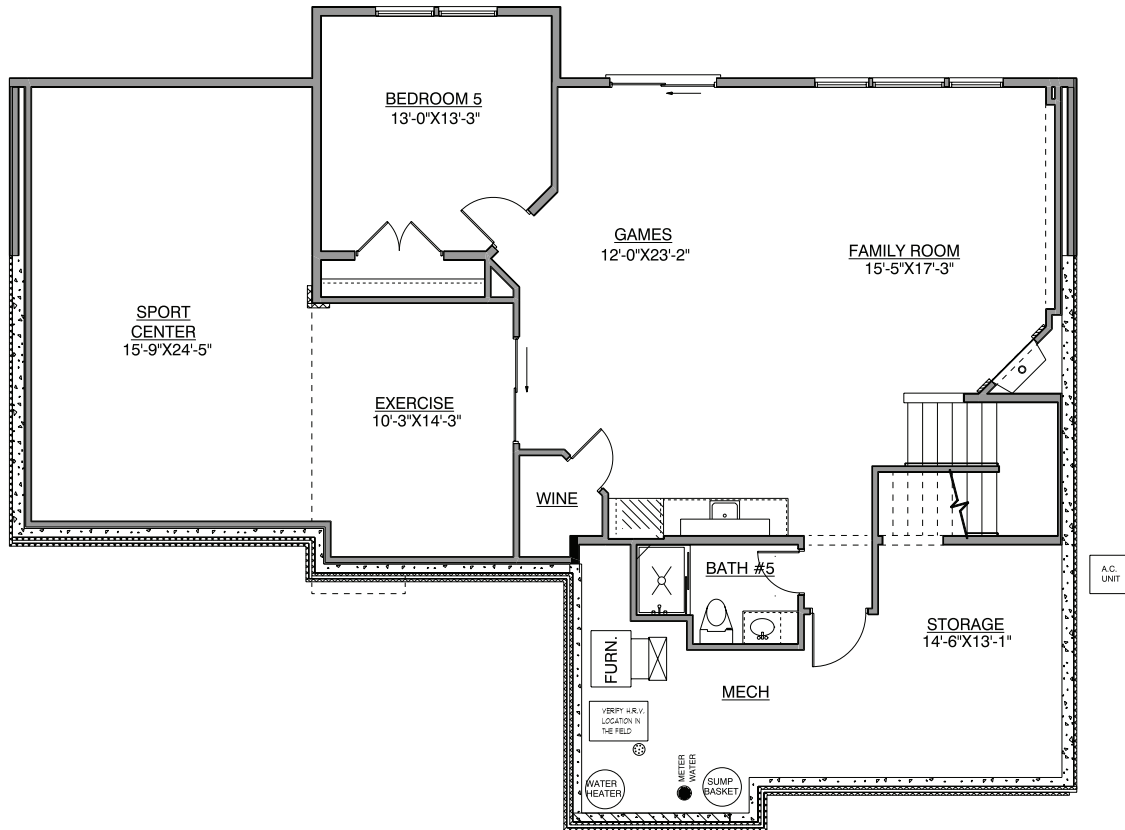
1,760 FINISHED SF
8' CEILINGS



*NOTE: Plan dimensions and square footage numbers are approximate, actual plans may vary slightly.

Lower Level

1,025 FINISHED SF
615 SPORT CENTER
8' OR 9' CEILINGS



UPDATED 11/2/2020

*NOTE: Plan dimensions and square footage numbers are approximate, actual plans may vary slightly.

Upper:	1,760	Garage:	762
Main:	1,629	Unfinished:	439
Lower:	1,025		
Sport Center:	615	House Width:	60' - 0"
Total Finished:	5,029		



hansonbuilders.com | 763-286-2509

© Copyright Hanson Companies, LLC. Note: the floor plans and elevations of all Hanson Builder, Inc. Homes are copyrighted. Our copyrights have been enforced and will continue to be enforced. These plans may not be given to or used by any other person or company without written permission. Specifications subject to change without notice. All plans are shown as concepts with some "Artistic license used." These drawings are not intended to show exact construction plans. Hanson Builders 13432 Hanson Blvd., Andover, MN 55304. LIC #BC004568

HANSON
BUILDERS