

# Rachel

LEGACY  
SERIES

5 BEDROOM  
3 BATHROOM  
4,182 FINISHED SF

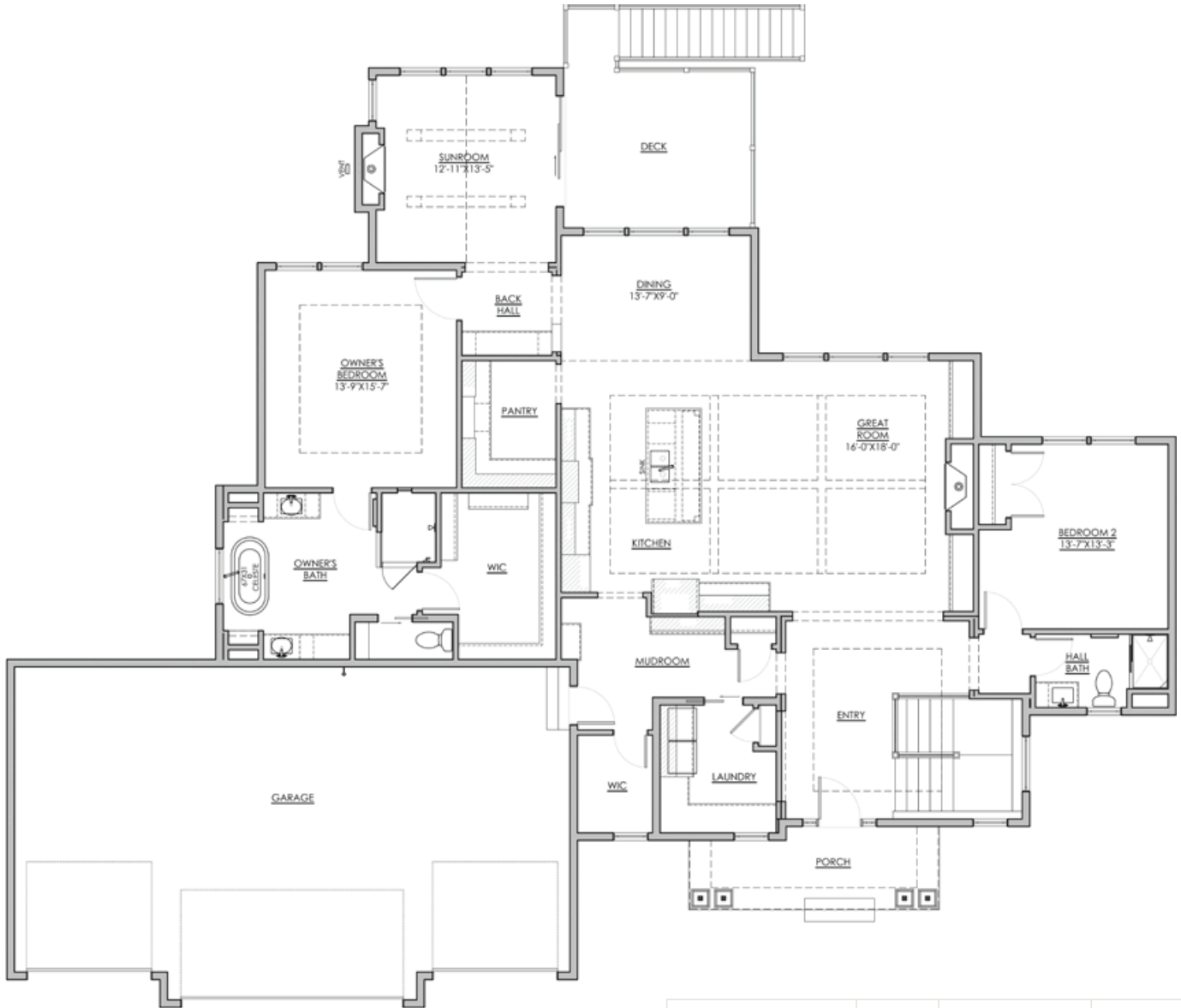


HANSON  
■■■ BUILDERS ■■■

# Main Level

Rachel LEGACY SERIES

2,345 FINISHED SF  
9' CEILINGS



Main:	2,345	Garage:	960
Lower:	1,837	Unfinished:	307
Total Finished:	4,182	House Width:	84' - 0"

\*NOTE: Plan dimensions and square footage numbers are approximate, actual plans may vary slightly.

**HANSON**  
■■■ BUILDERS ■■■

# Lower Level

Rachel LEGACY SERIES

1,837 FINISHED SF  
8' CEILINGS



**HANSON**  
■■■ BUILDERS ■■■

\*NOTE: Plan dimensions and square footage numbers are approximate, actual plans may vary slightly.

UPDATED 10/19/2023

\*NOTE: Plan dimensions and square footage numbers are approximate, actual plans may vary slightly.



[hansonbuilders.com](http://hansonbuilders.com) | 763-286-2509

© Copyright Hanson Companies, LLC. Note: the floor plans and elevations of all Hanson Builder, Inc. Homes are copyrighted. Our copyrights have been enforced and will continue to be enforced. These plans may not be given to or used by any other person or company without written permission. Specifications subject to change without notice. All plans are shown as concepts with some "Artistic license used." These drawings are not intended to show exact construction plans. Hanson Builders 13432 Hanson Blvd., Andover, MN 55304. LIC #BC004568

HANSON  
■■■ BUILDERS ■■■