

Westley Sport

IDENTITY
SERIES

4 - 5 BEDROOM
5 BATHROOM
4,019 FINISHED SF



ELEVATION C ■ ■ ■ ■



ELEVATION A ■ ■ ■ ■



ELEVATION B ■ ■ ■ ■



ELEVATION D ■ ■ ■ ■



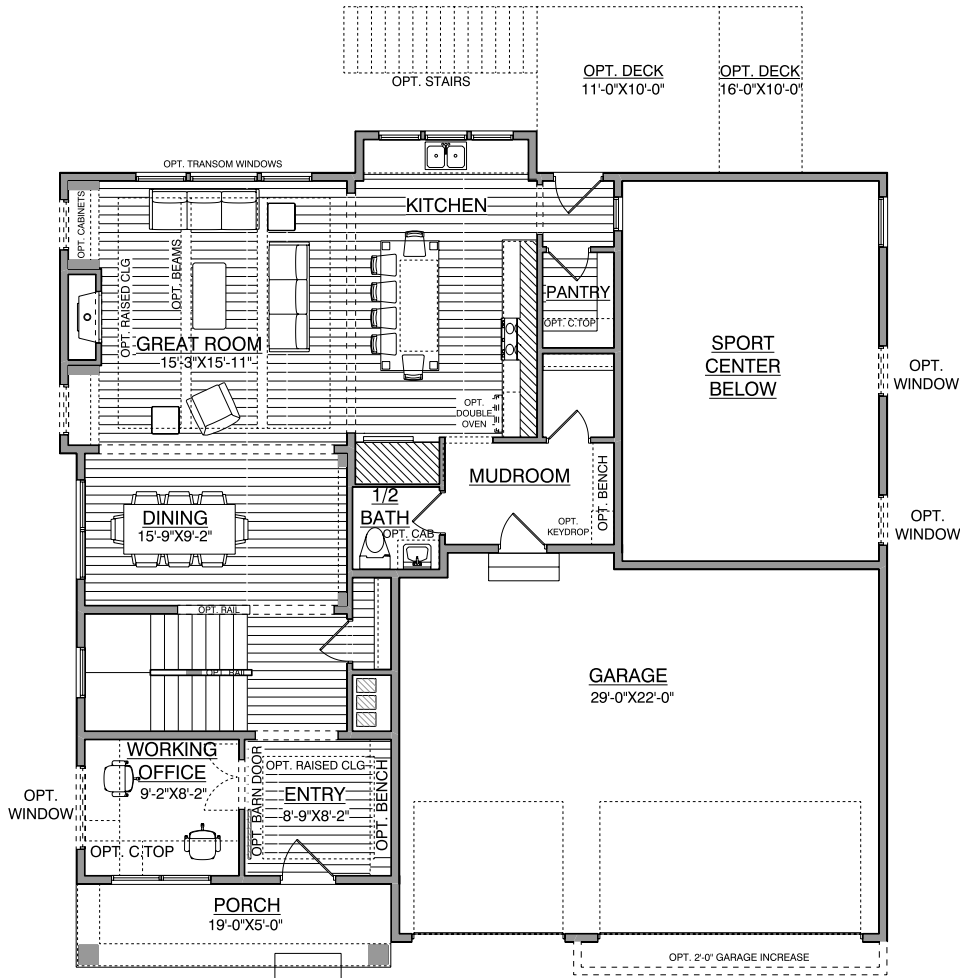
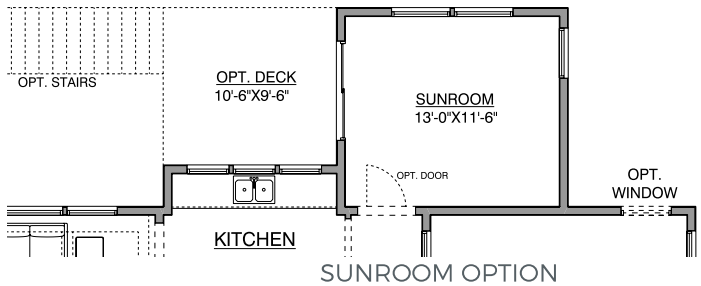
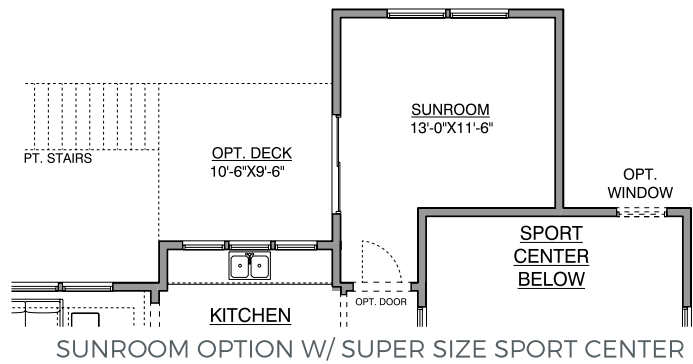
ELEVATION E ■ ■ ■ ■

HANSON
■ ■ ■ BUILDERS ■ ■ ■

Main Level

Westley Sport IDENTITY SERIES

1,199 FINISHED SF
9' CEILINGS

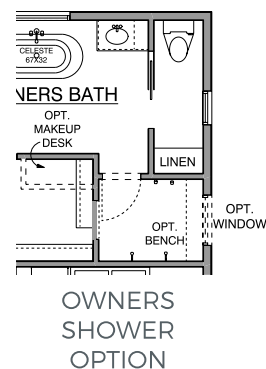
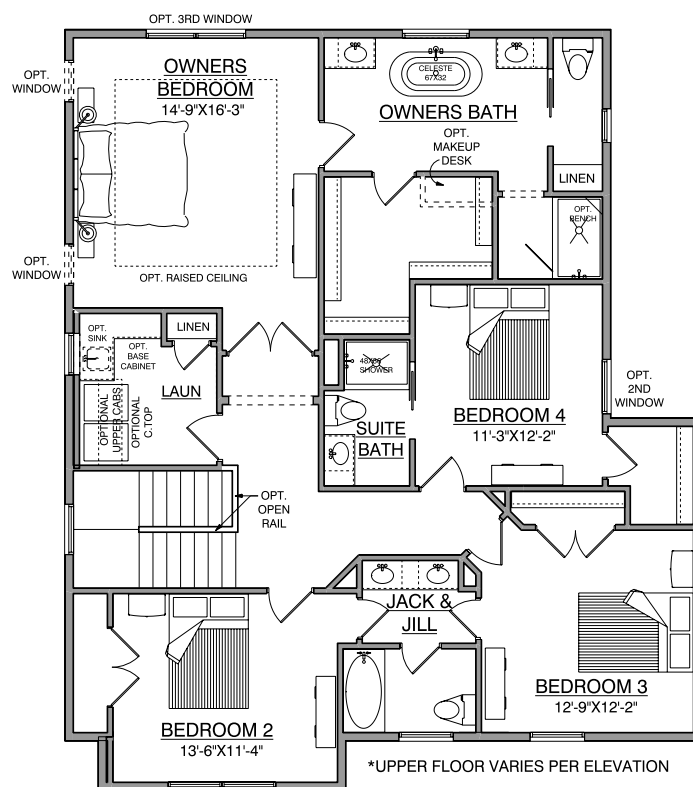


*NOTE: Plan dimensions and square footage numbers are approximate, actual plans may vary slightly.

Upper Level

1,572 FINISHED SF
8' CEILINGS

Westley Sport IDENTITY SERIES



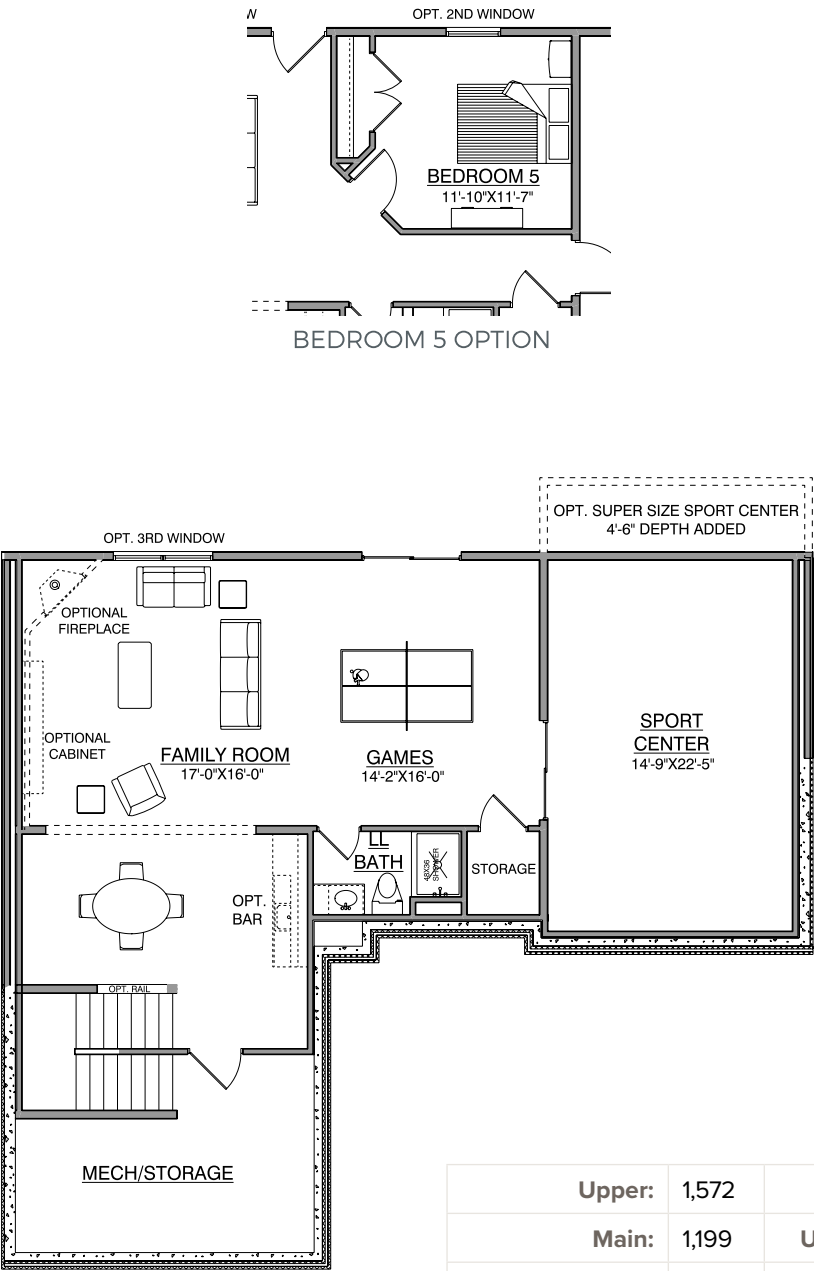
*UPPER FLOOR VARIES PER ELEVATION

*NOTE: Plan dimensions and square footage numbers are approximate, actual plans may vary slightly.

Lower Level

Westley Sport IDENTITY SERIES

864 FINISHED SF
384 SPORT CENTER
8' CEILINGS



UPDATED 7/7/2023

*NOTE: Plan dimensions and square footage numbers are approximate, actual plans may vary slightly.

Upper:	1,572	Garage:	673
Main:	1,199	Unfinished:	283
Lower:	864		
Sport Center:	384	House Width:	50' - 0"
Total Finished:	4,019		



hansonbuilders.com | 763-286-2509

© Copyright Hanson Companies, LLC. Note: the floor plans and elevations of all Hanson Builder, Inc. Homes are copyrighted. Our copyrights have been enforced and will continue to be enforced. These plans may not be given to or used by any other person or company without written permission. Specifications subject to change without notice. All plans are shown as concepts with some "Artistic license used." These drawings are not intended to show exact construction plans. Hanson Builders 13432 Hanson Blvd., Andover, MN 55304. LIC #BC004568

HANSON BUILDERS