

# Rockwell

LEGACY  
SERIES

4 BEDROOM  
4 BATHROOM  
4,765 FINISHED SF

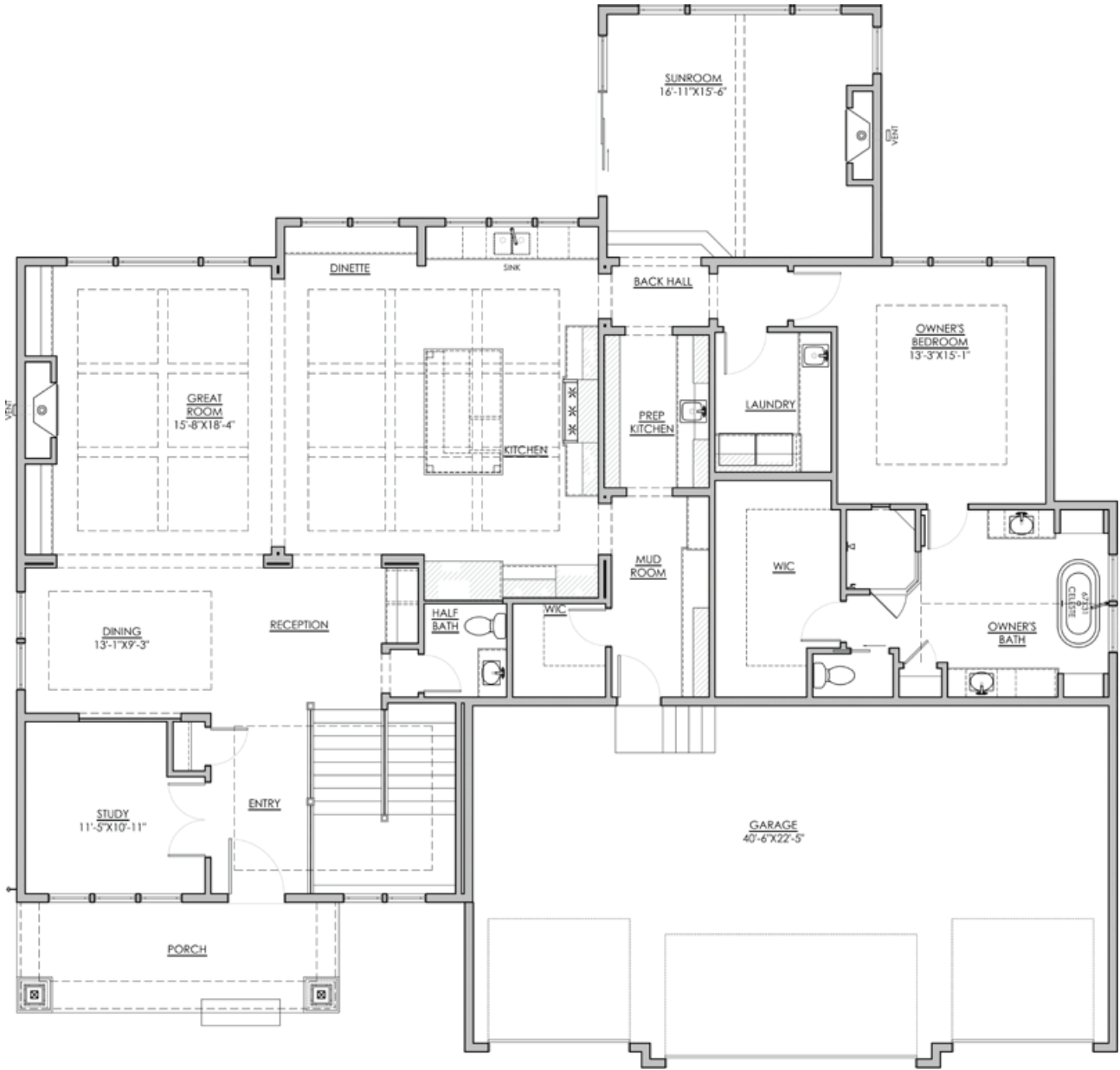


HANSON  
■■■ BUILDERS ■■■

# Main Level

Rockwell  
LEGACY  
SERIES

2,635 FINISHED SF  
9' CEILINGS



Main:	2,635	Garage:	926
Lower:	2,130	Unfinished:	166
		House Width:	74' - 0"
Total Finished:		4,765	

\*NOTE: Plan dimensions and square footage numbers are approximate, actual plans may vary slightly.

HANSON  
B U I L D E R S

# Lower Level

Rockwell LEGACY  
SERIES

2,130 FINISHED SF  
8' CEILINGS



HANSON  
■■■ BUILDERS ■■■

\*NOTE: Plan dimensions and square footage numbers are approximate, actual plans may vary slightly.

UPDATED 10/20/2023

\*NOTE: Plan dimensions and square footage numbers are approximate, actual plans may vary slightly.



[hansonbuilders.com](https://hansonbuilders.com) | 763-286-2509

© Copyright Hanson Companies, LLC. Note: the floor plans and elevations of all Hanson Builder, Inc. Homes are copyrighted. Our copyrights have been enforced and will continue to be enforced. These plans may not be given to or used by any other person or company without written permission. Specifications subject to change without notice. All plans are shown as concepts with some "Artistic license used." These drawings are not intended to show exact construction plans. Hanson Builders 13432 Hanson Blvd., Andover, MN 55304. LIC #BC004568

HANSON  
■■■ BUILDERS ■■■