

Hillsdale

IDENTITY
SERIES

5 BEDROOM
5 BATHROOM
4,318 - 4,446 FINISHED SF



ELEVATION E ■■■■



ELEVATION A ■■■■



ELEVATION B ■■■■



ELEVATION C ■■■■

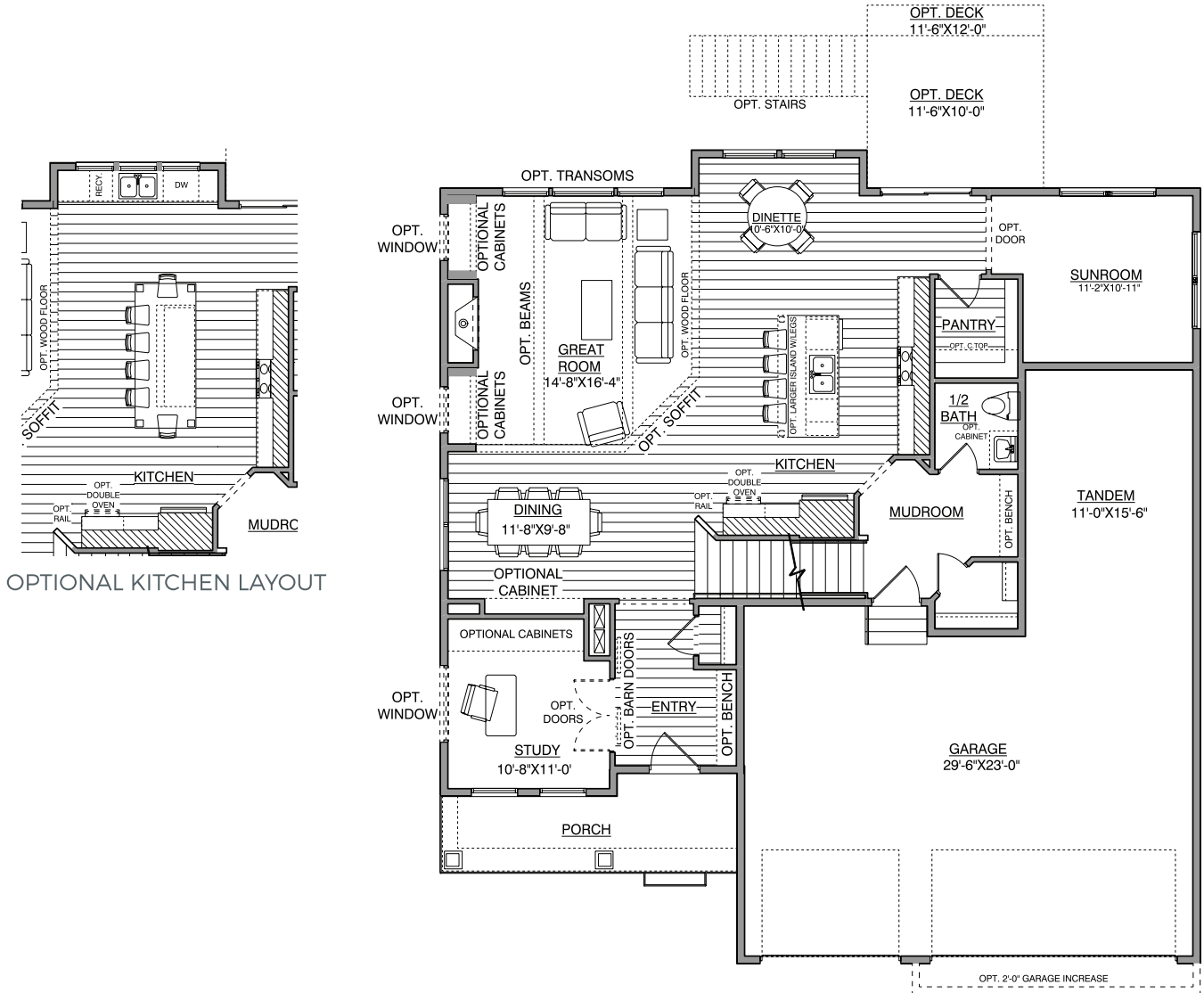


ELEVATION D ■■■■

HANSON
■■■ BUILDERS ■■■

Main Level

1,470 FINISHED SF
9' CEILINGS

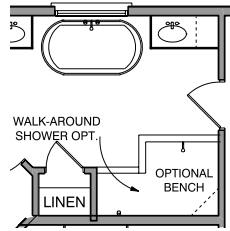


OPTIONAL KITCHEN LAYOUT

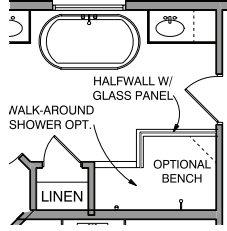
*NOTE: Plan dimensions and square footage numbers are approximate, actual plans may vary slightly.

Upper Level

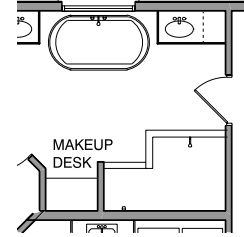
1,710 - 1,838 FINISHED SF
8' CEILINGS



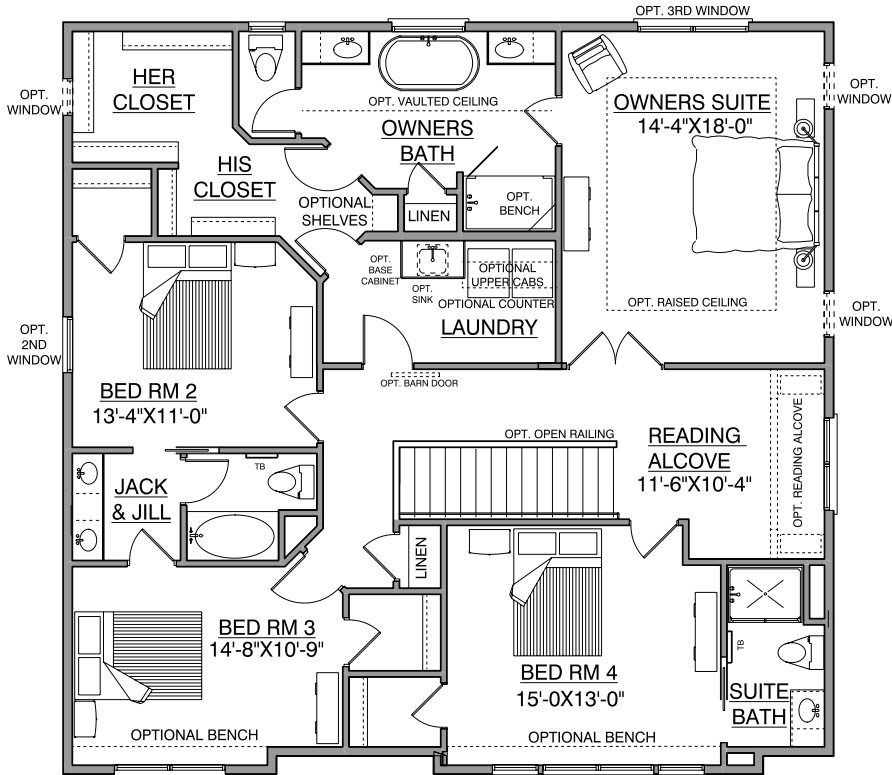
OWNERS SHOWER OPTION 1



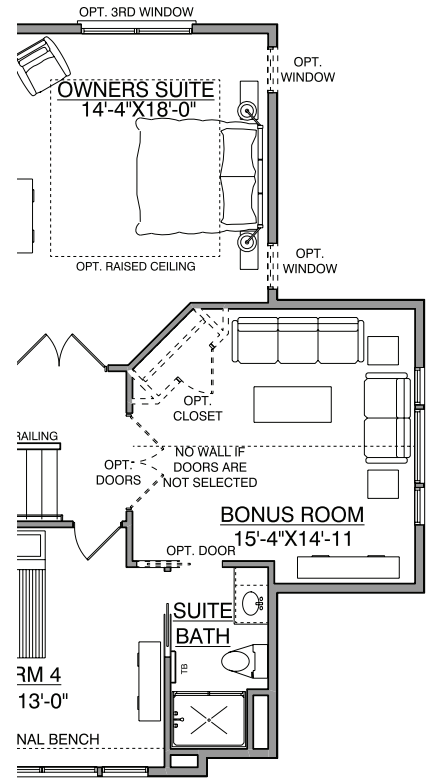
OWNERS SHOWER OPTION 2



OPT. MAKEUP DESK



*UPPER FLOOR VARIES PER ELEVATION



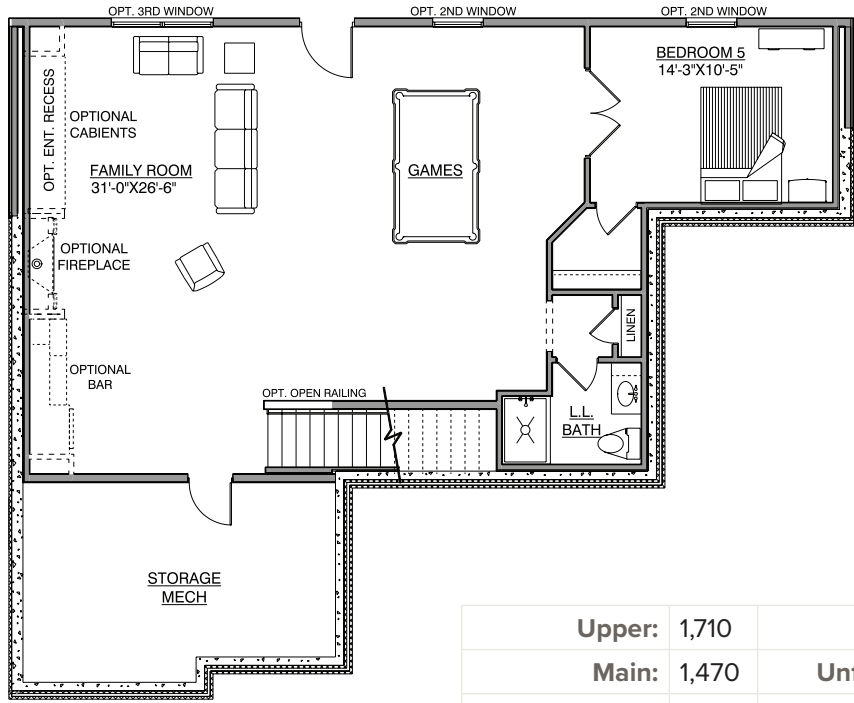
BONUS ROOM OPTION
ADDS 128 SF

*NOTE: Plan dimensions and square footage numbers are approximate, actual plans may vary slightly.

Lower Level

Hillsdale IDENTITY SERIES

1,138 FINISHED SF
8' CEILINGS



Upper:	1,710	Garage:	877
Main:	1,470	Unfinished:	297
Lower:	1,138	House Width:	50' - 0"
Total Finished:	4,318		

Opt. Bonus:	128		
--------------------	-----	--	--

UPDATED 12/29/2022
*NOTE: Plan dimensions and square footage numbers are approximate, actual plans may vary slightly.