



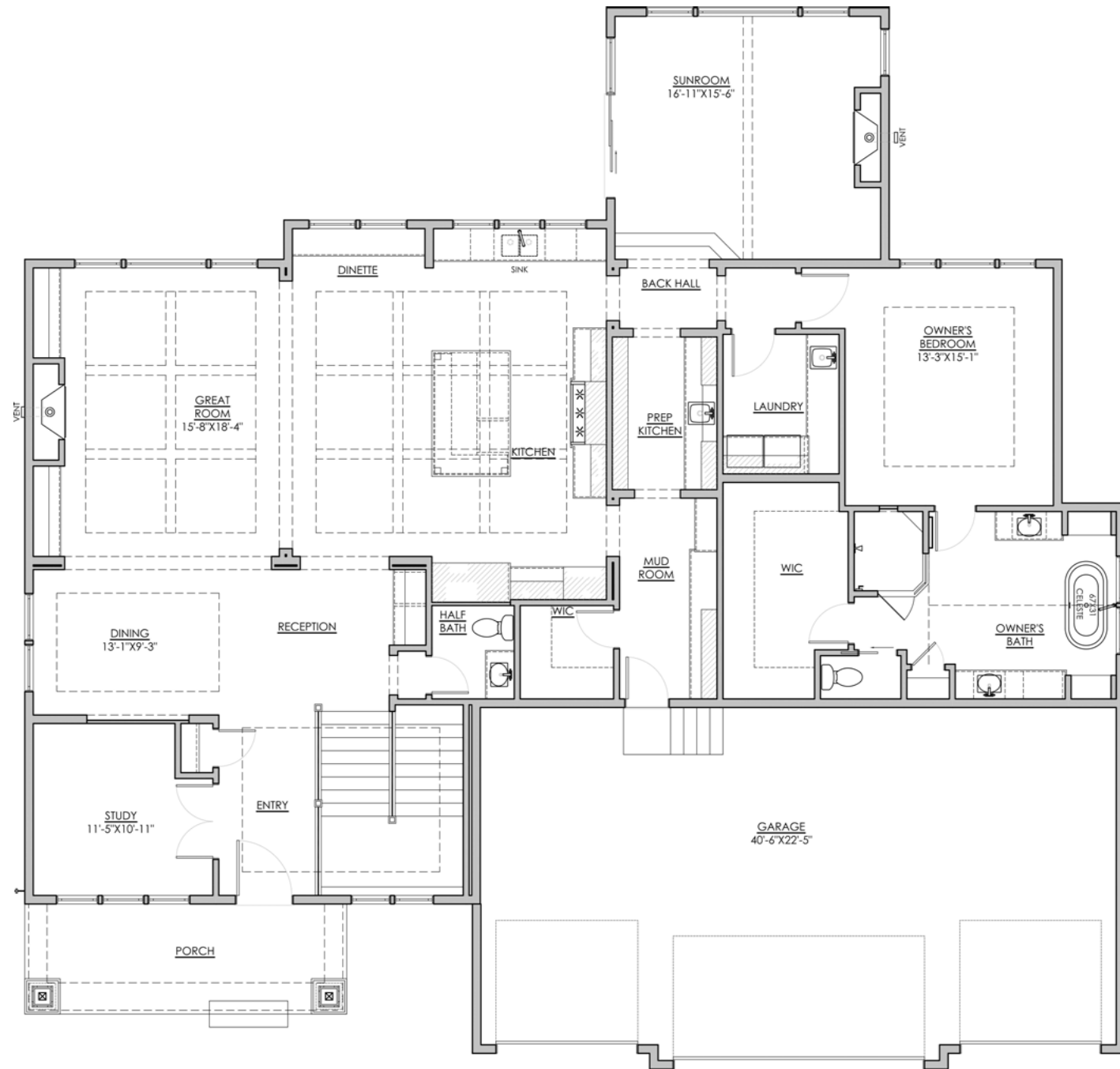
UPDATED 8/30/2023

*NOTE: PLAN DIMENSIONS ARE APPROXIMATE, ACTUAL PLANS MAY VARY SLIGHTLY. SQUARE FOOTAGE NUMBERS ARE APPROXIMATE, ACTUAL PLANS MAY VARY SLIGHTLY

MAIN LEVEL

2,635 FINISHED SF

9' OR 10' CEILINGS



Main: 2,635 Garage: 926
 Lower: 2,130 Unfinished: 166
 Total Finished: 4,765

House Width: 74'-0"

*NOTE: PLAN DIMENSIONS ARE APPROXIMATE, ACTUAL PLANS MAY VARY SLIGHTLY. SQUARE FOOTAGE NUMBERS ARE APPROXIMATE, ACTUAL PLANS MAY VARY SLIGHTLY



© COPYRIGHT HANSON COMPANIES, LLC
 NOTE: THE FLOOR PLANS AND ELEVATIONS OF ALL HANSON BUILDERS, INC. HOMES ARE COPYRIGHTED. OUR COPYRIGHTS HAVE BEEN ENFORCED AND WILL CONTINUE TO BE ENFORCED. THESE PLANS MAY NOT BE GIVEN TO OR USED BY ANY OTHER PERSON OR COMPANY WITHOUT WRITTEN PERMISSION. SPECIFICATIONS SUBJECT TO CHANGE WITHOUT NOTICE. ALL PLANS ARE SHOWN AS CONCEPTS WITH SOME "ARTISTIC LICENSE USED. THESE DRAWINGS ARE NOT INTENDED TO SHOW EXACT CONSTRUCTION PLANS. HANSON BUILDERS 13432 HANSON BLVD ANDOVER MN, 55304 763-421-5435 LIC. #BC004568

LOWER LEVEL

2,130 FINISHED SF

9' CEILINGS



*NOTE: PLAN DIMENSIONS ARE APPROXIMATE, ACTUAL PLANS MAY VARY SLIGHTLY. SQUARE FOOTAGE NUMBERS ARE APPROXIMATE, ACTUAL PLANS MAY VARY SLIGHTLY



© COPYRIGHT HANSON COMPANIES, LLC
 NOTE: THE FLOOR PLANS AND ELEVATIONS OF ALL HANSON BUILDERS, INC. HOMES ARE COPYRIGHTED. OUR COPYRIGHTS HAVE BEEN ENFORCED AND WILL CONTINUE TO BE ENFORCED. THESE PLANS MAY NOT BE GIVEN TO OR USED BY ANY OTHER PERSON OR COMPANY WITHOUT WRITTEN PERMISSION. SPECIFICATIONS SUBJECT TO CHANGE WITHOUT NOTICE. ALL PLANS ARE SHOWN AS CONCEPTS WITH SOME "ARTISTIC LICENSE USED. THESE DRAWINGS ARE NOT INTENDED TO SHOW EXACT CONSTRUCTION PLANS. HANSON BUILDERS 13432 HANSON BLVD ANDOVER MN, 55304 763-421-5435 LIC. #BC004568