

Weston Sport

IDENTITY
SERIES

3 - 6 BEDROOM
4 - 5 BATHROOM
3,829 - 4,081 FINISHED SF



ELEVATION B ■ ■ ■ ■



ELEVATION A ■ ■ ■ ■



ELEVATION C ■ ■ ■ ■



ELEVATION E ■ ■ ■ ■



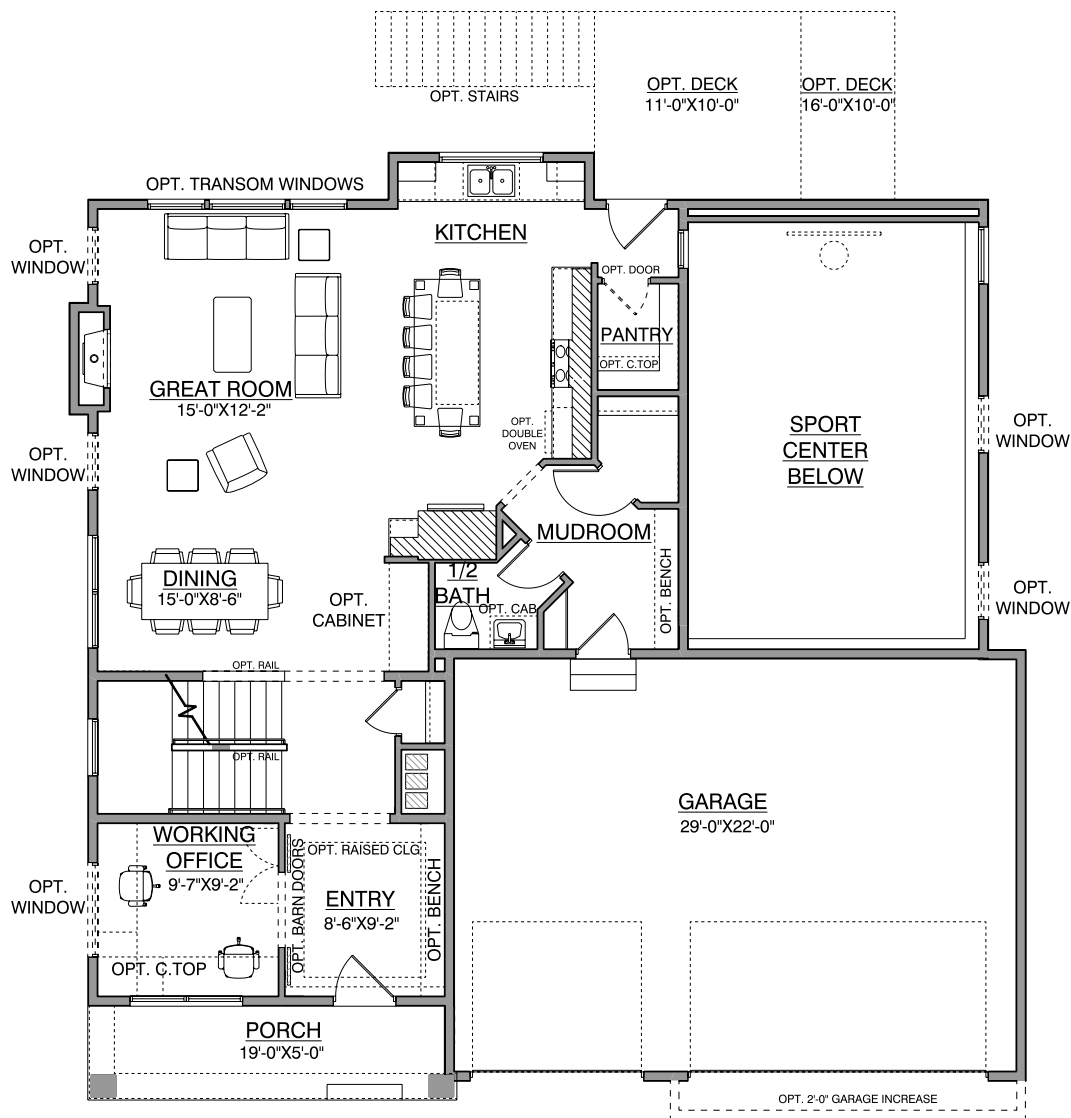
ELEVATION D ■ ■ ■ ■

HANSON
■ ■ ■ BUILDERS ■ ■ ■

Main Level

Weston Sport IDENTITY SERIES

1,179 FINISHED SF
9' CEILINGS



*NOTE: Plan dimensions and square footage numbers are approximate, actual plans may vary slightly.

1,427 FINISHED SF
8' CEILINGS

BEDROOM 3
10'-3"X11'-10"

3M 3
1'-10"

BONUS ROOM
17'-6" X 13'-0"

WINDOWS VARY PER ELEVATION
(WINDOWS MOVE TO REAR FOR ELEVATION C, D, E)

OWNERS BEDROOM
14'-3"X15'-9"
OPT. 3RD WINDOW
OPT. WINDOW
OPT. WINDOW
OPT. RAISED CEILING

OWNERS BATH
OPT. OVERSIZED SHOWER
LINEN

HALL BATH

BEDROOM 3
10'-3"X11'-10"
OPT. DESK NOT AVAIL. W/ BONUS ROOM
OPT. WINDOW

BEDROOM 2
12'-2"X10'-7"

LOFT
13'-5"X12'-4"
OPT. OPEN RAIL
OPT. OPEN RAIL

LAUN
OPT. FOLDING COUNTER
LINEN
OPTIONAL C.TOP
OPTIONAL UPPER CABS
OPT. SINK/BASE CABINET

OPT BEDROOM
13'-5" X 12'-4"

LINEN

OPT. BONUS ROOM - ADDS 252 SF

M 4
'-10"

OPT BEDROOM
12'-2"X12'-11"

48" X 60" SHOWER

TOILET

SINK

WINDOWS VARY PER ELEVATION
(NO FRONT WINDOWS FOR ELEVATION C, D, E)

HANSON
BUILERS

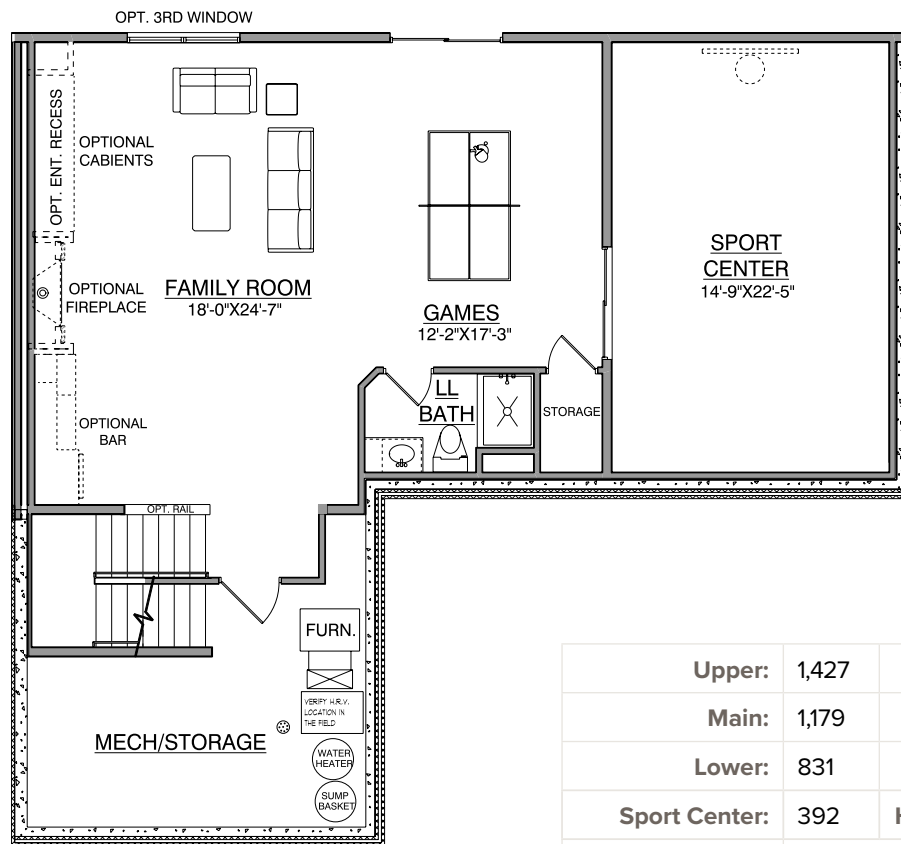
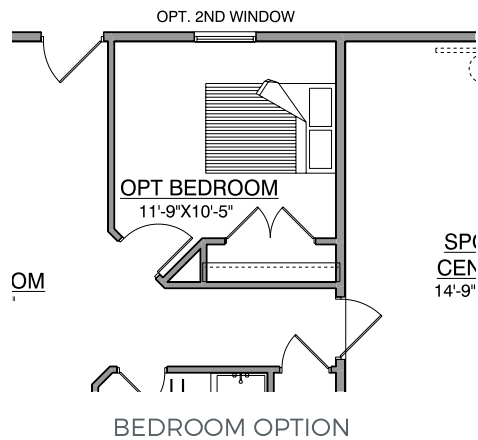
*NOTE: Plan dimensions and square footage numbers are approximate, actual plans may vary slightly.

Lower Level

831 FINISHED SF

392 SPORT CENTER

8' CEILINGS



Upper:	1,427	Garage:	689
Main:	1,179	Unfinished:	315
Lower:	831		
Sport Center:	392	House Width:	50' - 0"
Total Finished:	3,829 - 4,081		

UPDATED 7/7/2023

*NOTE: Plan dimensions and square footage numbers are approximate, actual plans may vary slightly.

Opt. Bonus Room:	252		
------------------	-----	--	--