

# Rockford

IDENTITY  
SERIES

4 BEDROOM  
3 BATHROOM  
2,605 - 2,773 FINISHED SF



ELEVATION A ■■■■

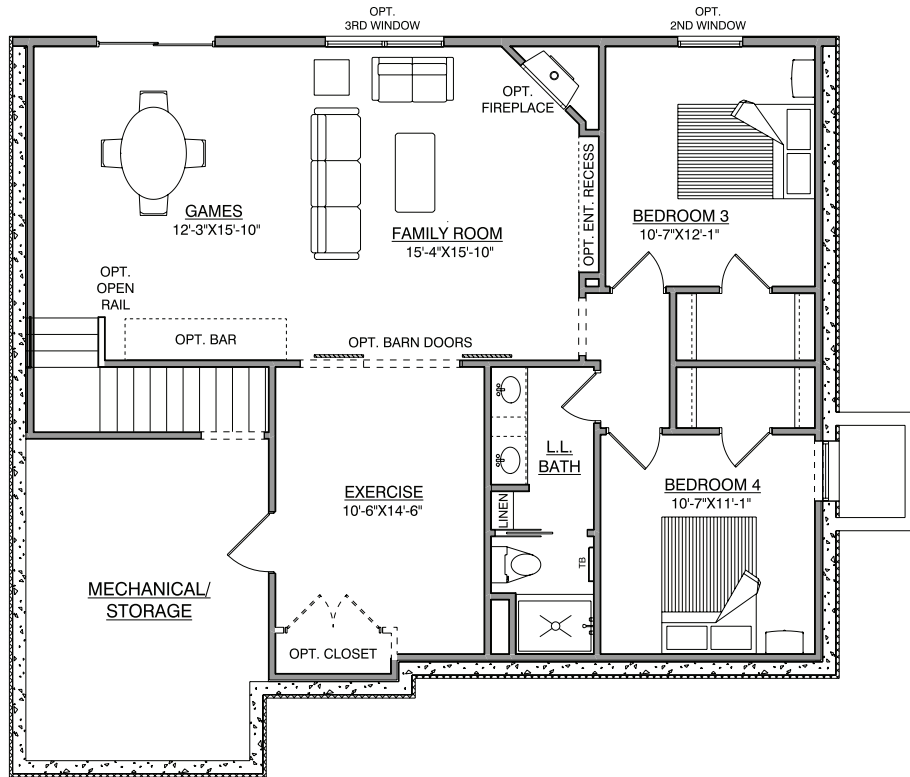
HANSON  
■■■ BUILDERS ■■■



# Lower Level

Rockford IDENTITY SERIES

1,167 FINISHED SF  
8' CEILINGS



<b>Main:</b>	1,438	<b>Garage:</b>	678
<b>Lower:</b>	1,167	<b>Unfinished:</b>	271
		<b>House Width:</b>	50' - 0"
<b>Total Finished:</b>	2,605 - 2,773		
<b>Opt. Sunroom:</b>	168		

**HANSON**  
BUILDERS

\*NOTE: Plan dimensions and square footage numbers are approximate, actual plans may vary slightly.

UPDATED: 1/30/2023

\*NOTE: Plan dimensions and square footage numbers are approximate, actual plans may vary slightly.



[hansonbuilders.com](http://hansonbuilders.com) | 763-286-2509

© Copyright Hanson Companies, LLC. Note: the floor plans and elevations of all Hanson Builder, Inc. Homes are copyrighted. Our copyrights have been enforced and will continue to be enforced. These plans may not be given to or used by any other person or company without written permission. Specifications subject to change without notice. All plans are shown as concepts with some "Artistic license used." These drawings are not intended to show exact construction plans. Hanson Builders 13432 Hanson Blvd., Andover, MN 55304. LIC #BC004568

HANSON  
■■■ BUILDERS ■■■