

# Veranda

VILLA  
SERIES

3 - 4 BEDROOM  
3 BATHROOM  
2,494 FINISHED SF



ELEVATION B ■■■■



ELEVATION A ■■■■



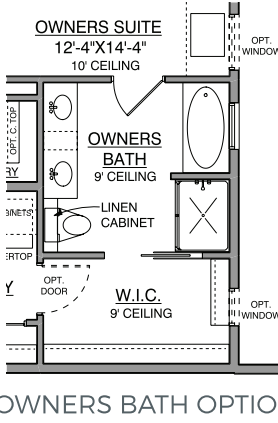
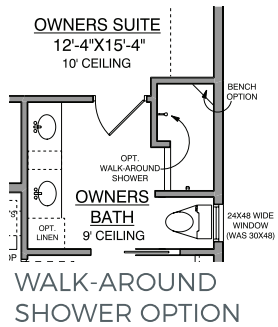
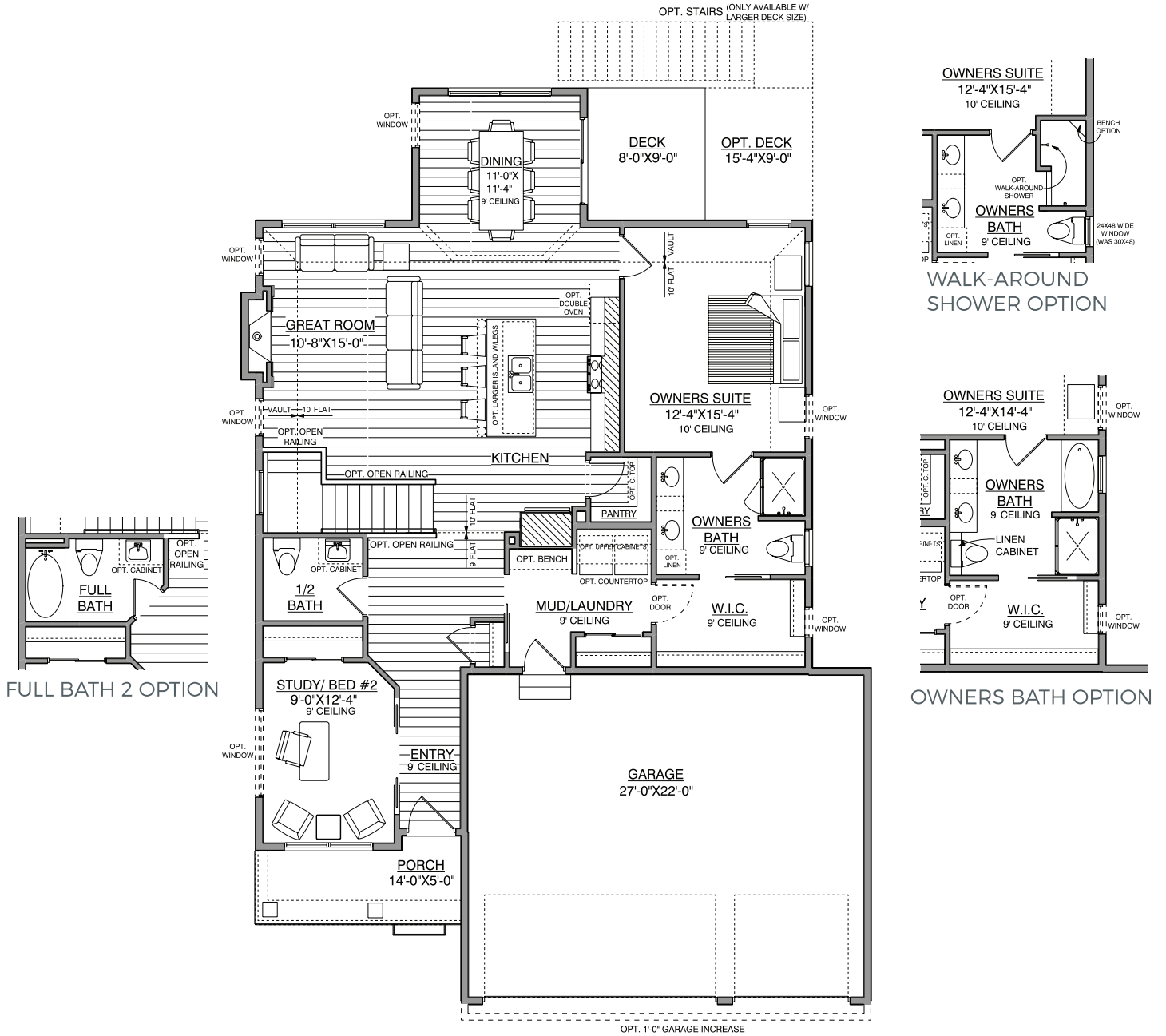
ELEVATION C ■■■■

HANSON  
■■■ BUILDERS ■■■

# Main Level

Veranda VILLA SERIES

1,462 FINISHED SF  
9' CEILINGS (10' VAULT)



FULL BATH 2 OPTION

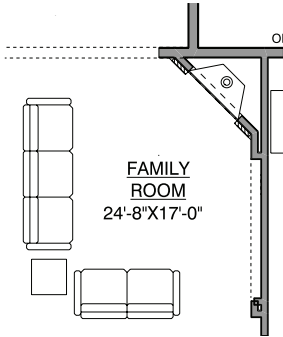
OWNERS BATH OPTION

\*NOTE: Plan dimensions and square footage numbers are approximate, actual plans may vary slightly.

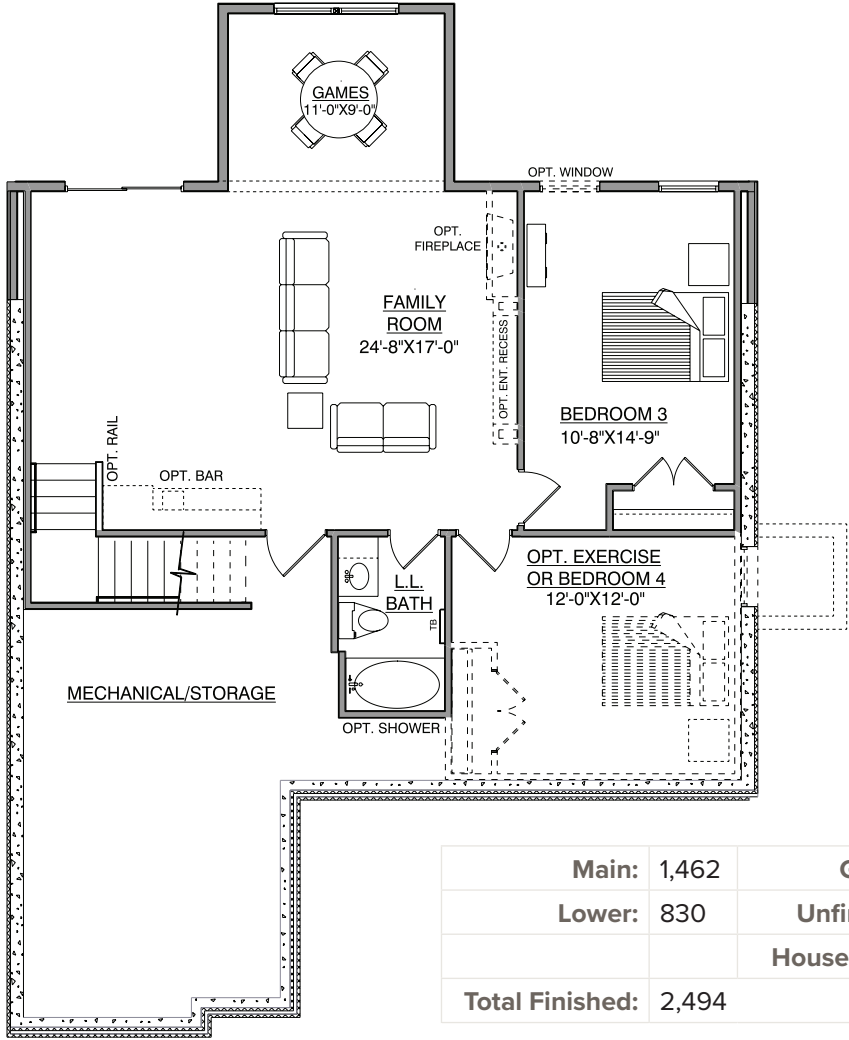
# Lower Level

Veranda VILLA SERIES

859 FINISHED SF  
8' CEILINGS



OPT. CORNER FIREPLACE



Main:	1,462	Garage:	627
Lower:	830	Unfinished:	424
		House Width:	42' - 0"
<b>Total Finished:</b>	<b>2,494</b>		

<b>Bed 4 Option:</b>	202		
----------------------	-----	--	--

\*NOTE: Plan dimensions and square footage numbers are approximate, actual plans may vary slightly.

UPDATED 10/26/2020

\*NOTE: Plan dimensions and square footage numbers are approximate, actual plans may vary slightly.



[hansonbuilders.com](http://hansonbuilders.com) | 763-286-2509

© Copyright Hanson Companies, LLC. Note: the floor plans and elevations of all Hanson Builder, Inc. Homes are copyrighted. Our copyrights have been enforced and will continue to be enforced. These plans may not be given to or used by any other person or company without written permission. Specifications subject to change without notice. All plans are shown as concepts with some "Artistic license used." These drawings are not intended to show exact construction plans. Hanson Builders 13432 Hanson Blvd., Andover, MN 55304. LIC #BC004568

**HANSON**  
■■■ BUILDERS ■■■