

Verona VILLA SERIES

3 - 4 BEDROOM
3 BATHROOM
2,527 FINISHED SF



ELEVATION C ■■■■



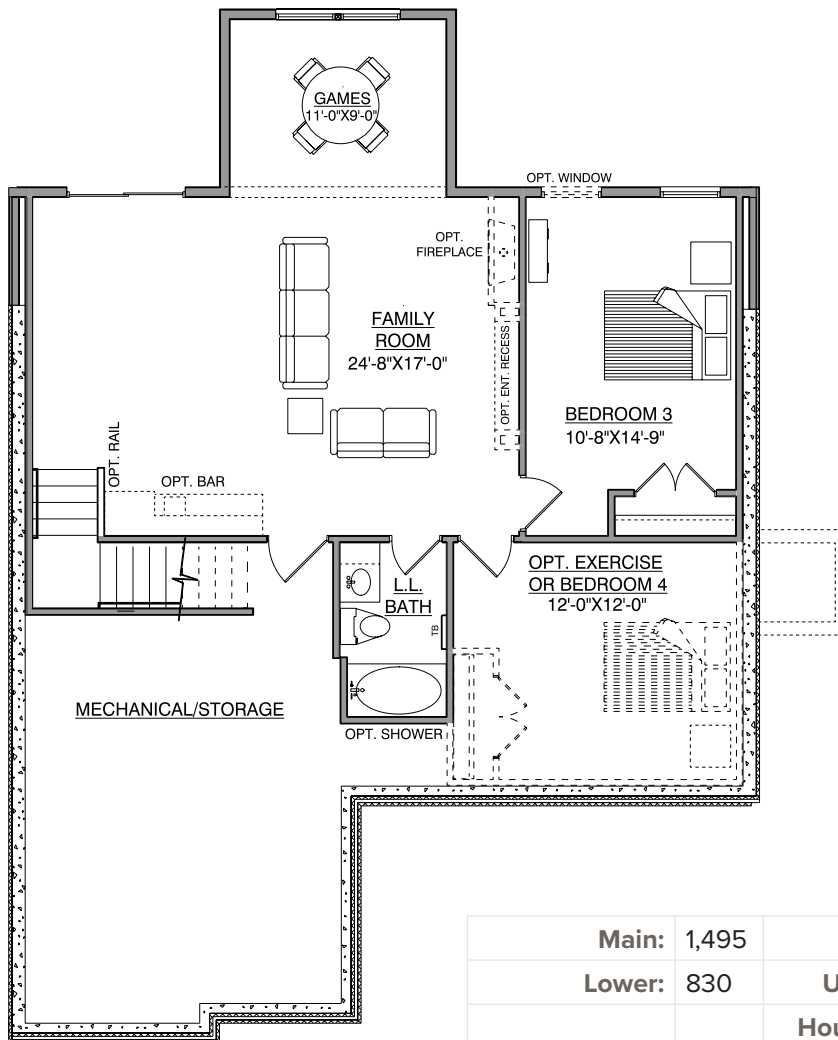
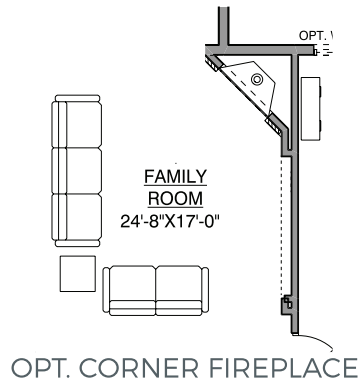
ELEVATION A ■■■■



ELEVATION B ■■■■

Lower Level

830 FINISHED SF
8' CEILINGS



Main:	1,495	Garage:	513
Lower:	830	Unfinished:	457
		House Width:	42' - 0"
Total Finished:	2,527		

Bed 4 Option:	202		
----------------------	-----	--	--

*NOTE: Plan dimensions and square footage numbers are approximate, actual plans may vary slightly.

UPDATED 10/26/2020

*NOTE: Plan dimensions and square footage numbers are approximate, actual plans may vary slightly.



hansonbuilders.com | 763-286-2509

© Copyright Hanson Companies, LLC. Note: the floor plans and elevations of all Hanson Builder, Inc. Homes are copyrighted. Our copyrights have been enforced and will continue to be enforced. These plans may not be given to or used by any other person or company without written permission. Specifications subject to change without notice. All plans are shown as concepts with some "Artistic license used." These drawings are not intended to show exact construction plans. Hanson Builders 13432 Hanson Blvd., Andover, MN 55304. LIC #BC004568

HANSON
■■■ BUILDERS ■■■