

Wyatt IDENTITY SERIES

3 - 6 BEDROOM
4 - 5 BATHROOM
3,437 - 4,037 FINISHED SF



ELEVATION C ■■■■



ELEVATION A ■■■■



ELEVATION B ■■■■



ELEVATION D ■■■■

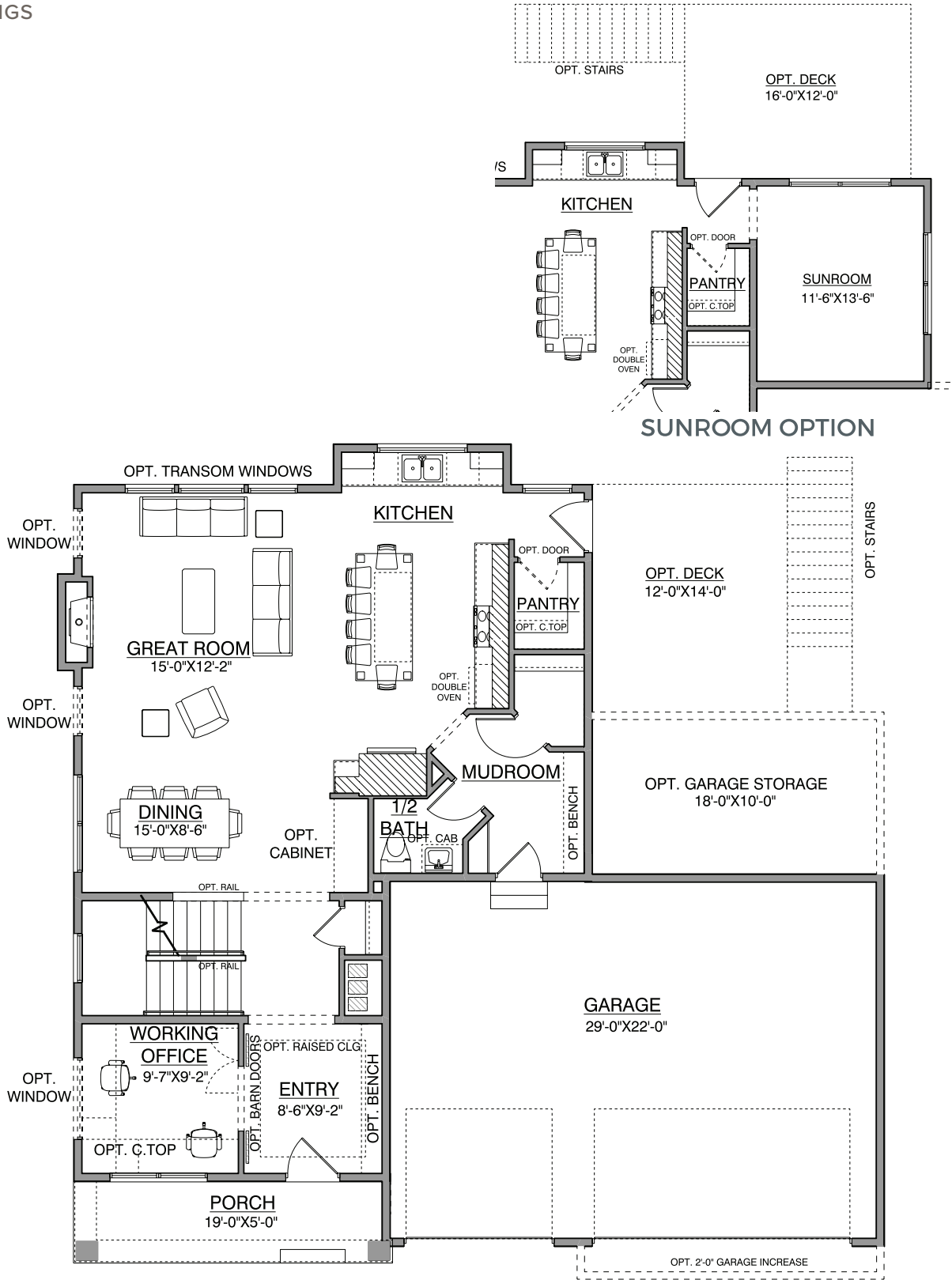


ELEVATION E ■■■■

HANSON
■■■ BUILDERS ■■■

Main Level

1,179 FINISHED SF
9' CEILINGS

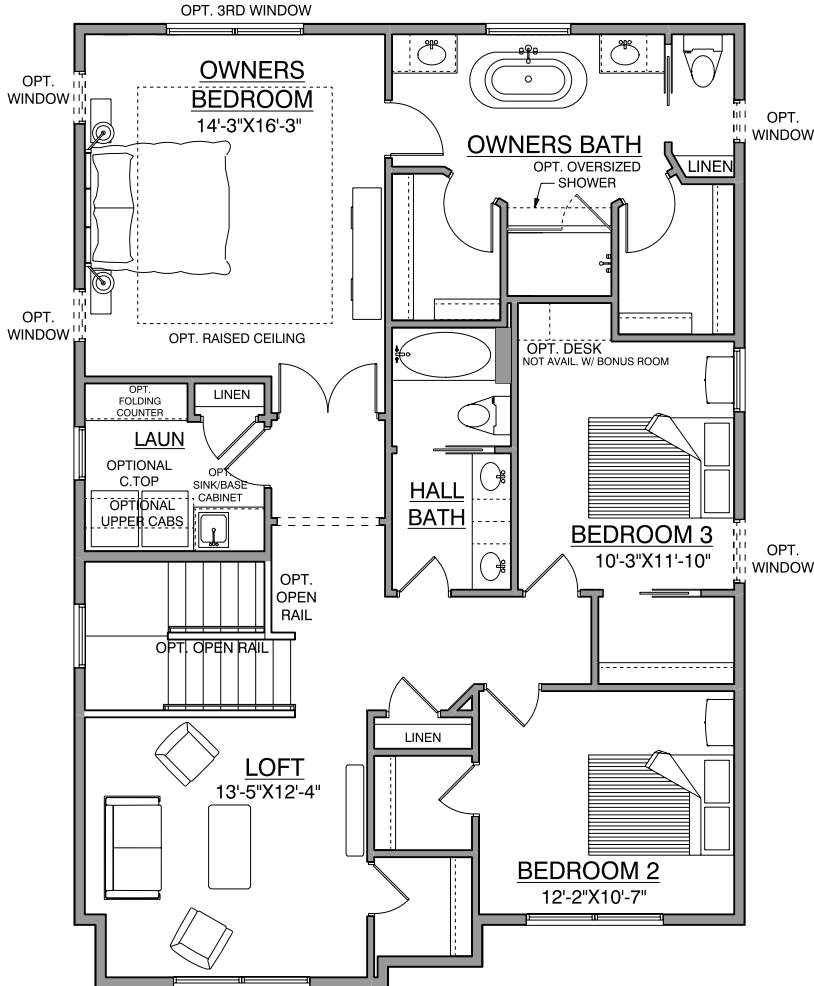


*NOTE: Plan dimensions and square footage numbers are approximate, actual plans may vary slightly.

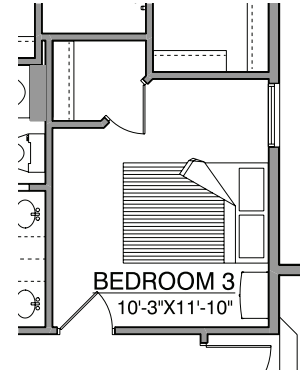
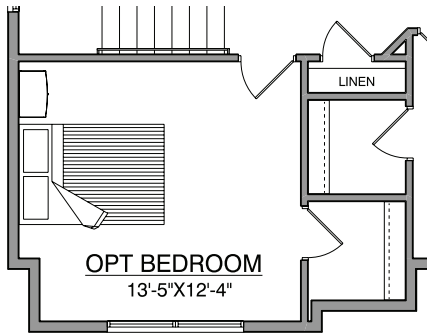
Upper Level

Wyatt IDENTITY SERIES

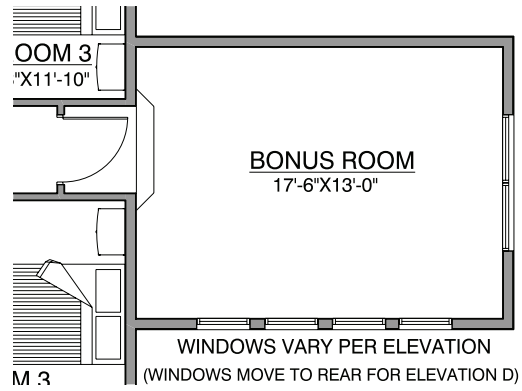
1,427 FINISHED SF
8' CEILINGS



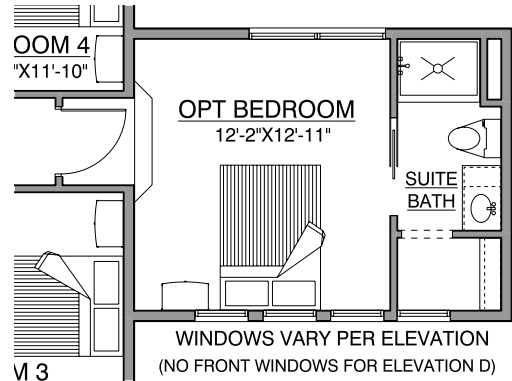
*UPPER FLOOR VARIES PER ELEVATION



BED 3 CLOSET W/ BONUS ROOM



OPT. BONUS ROOM - ADDS 252 SF



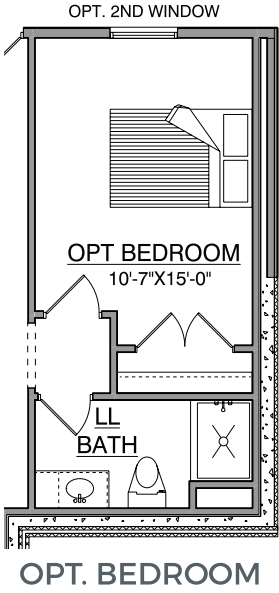
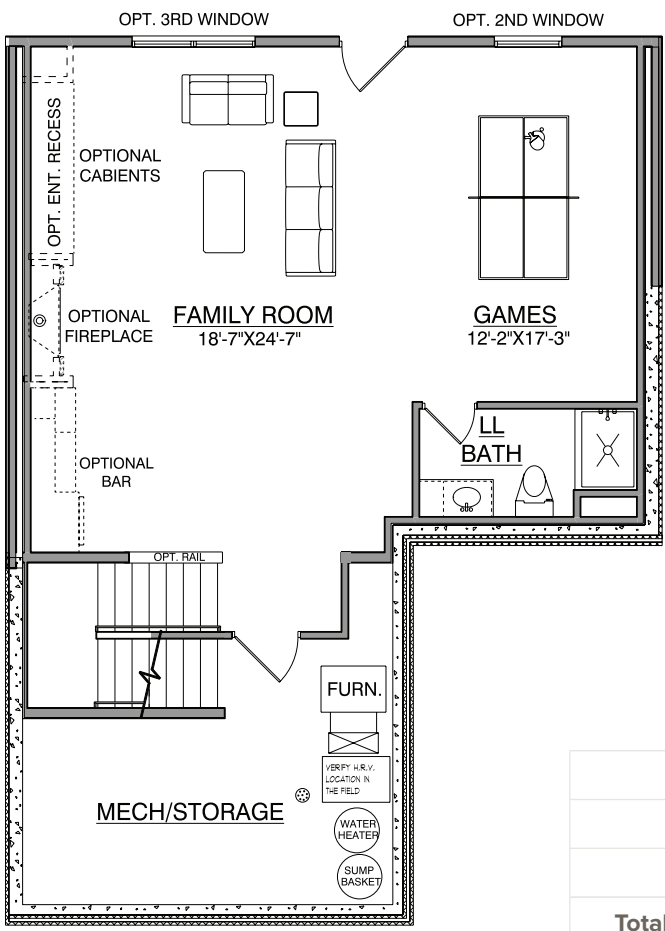
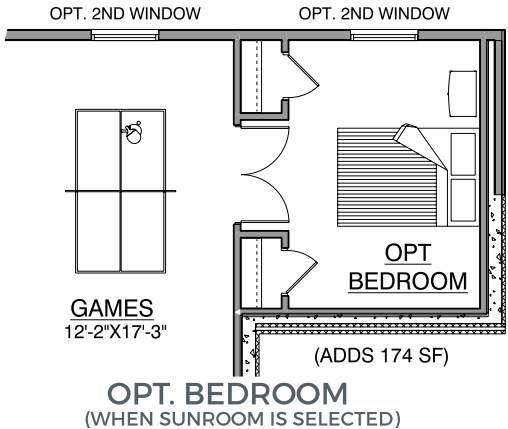
OPT. BEDROOM W/ BATHROOM

*NOTE: Plan dimensions and square footage numbers are approximate, actual plans may vary slightly.

Lower Level

Wyatt IDENTITY SERIES

831 - 1,005 FINISHED SF
8' CEILINGS



Upper:	1,427	Garage:	689-916
Main:	1,179	Unfinished:	315
Lower:	831	House Width:	50' - 0"
Total Finished:	4,037		

Opt. Bonus Room:	252		
Opt. Sunroom+LL:	348		

UPDATED 11/10/2022

*NOTE: Plan dimensions and square footage numbers are approximate, actual plans may vary slightly.

 hansonbuilders.com | 763-286-2509

© Copyright Hanson Companies, LLC. Note: the floor plans and elevations of all Hanson Builder, Inc. Homes are copyrighted. Our copyrights have been enforced and will continue to be enforced. These plans may not be given to or used by any other person or company without written permission. Specifications subject to change without notice. All plans are shown as concepts with some "Artistic license used." These drawings are not intended to show exact construction plans. Hanson Builders 13432 Hanson Blvd., Andover, MN 55304. LIC #BC004568

HANSON
B U I L D E R S