

Bridgewater Sport

IDENTITY
SERIES

5 - 6 BEDROOM
5 BATHROOM
5,052 - 5,420 FINISHED SF

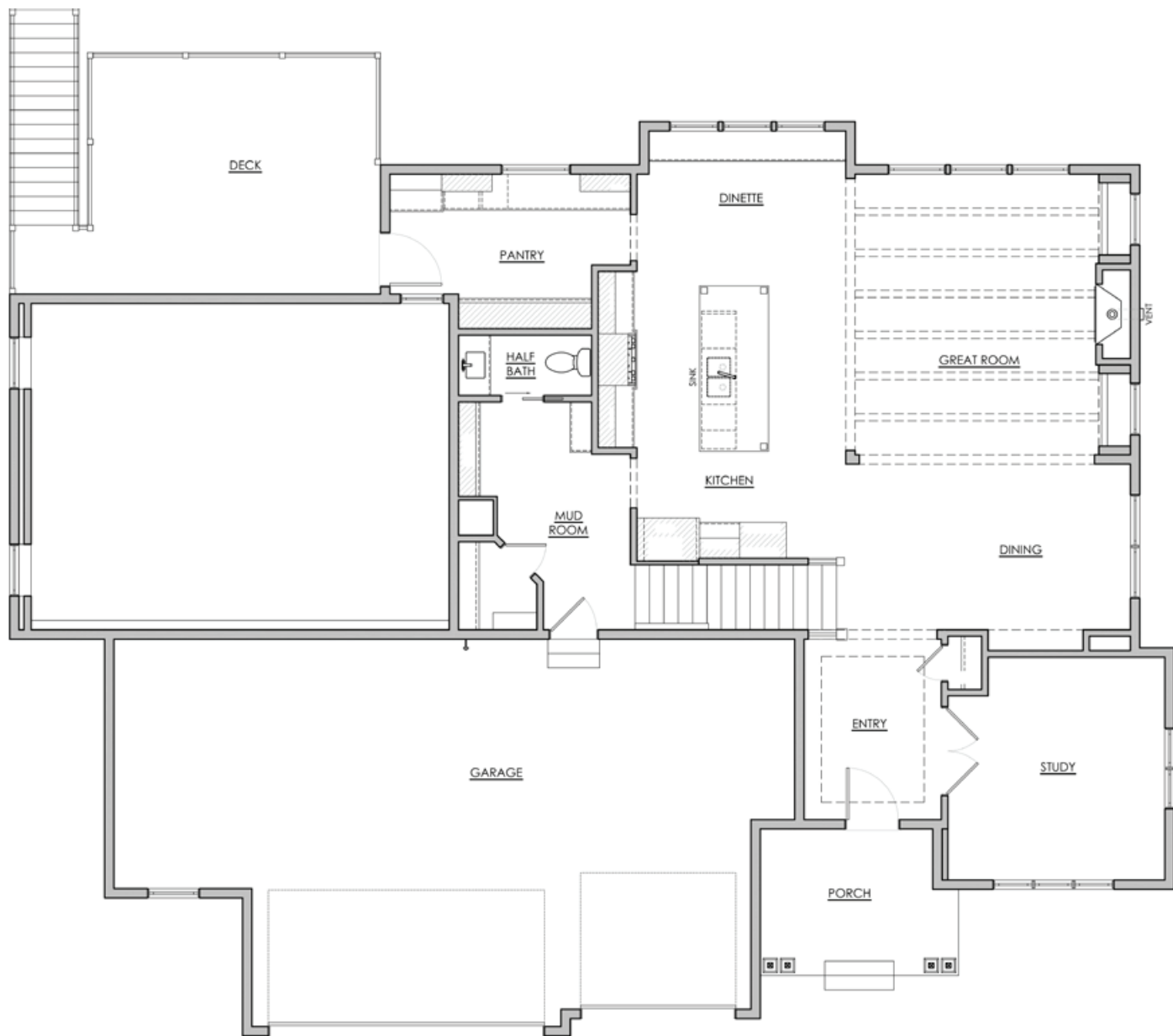


HANSON
■■■ BUILDERS ■■■

Main Level

1,453 FINISHED SF
9' CEILINGS

Bridgewater Sport IDENTITY SERIES

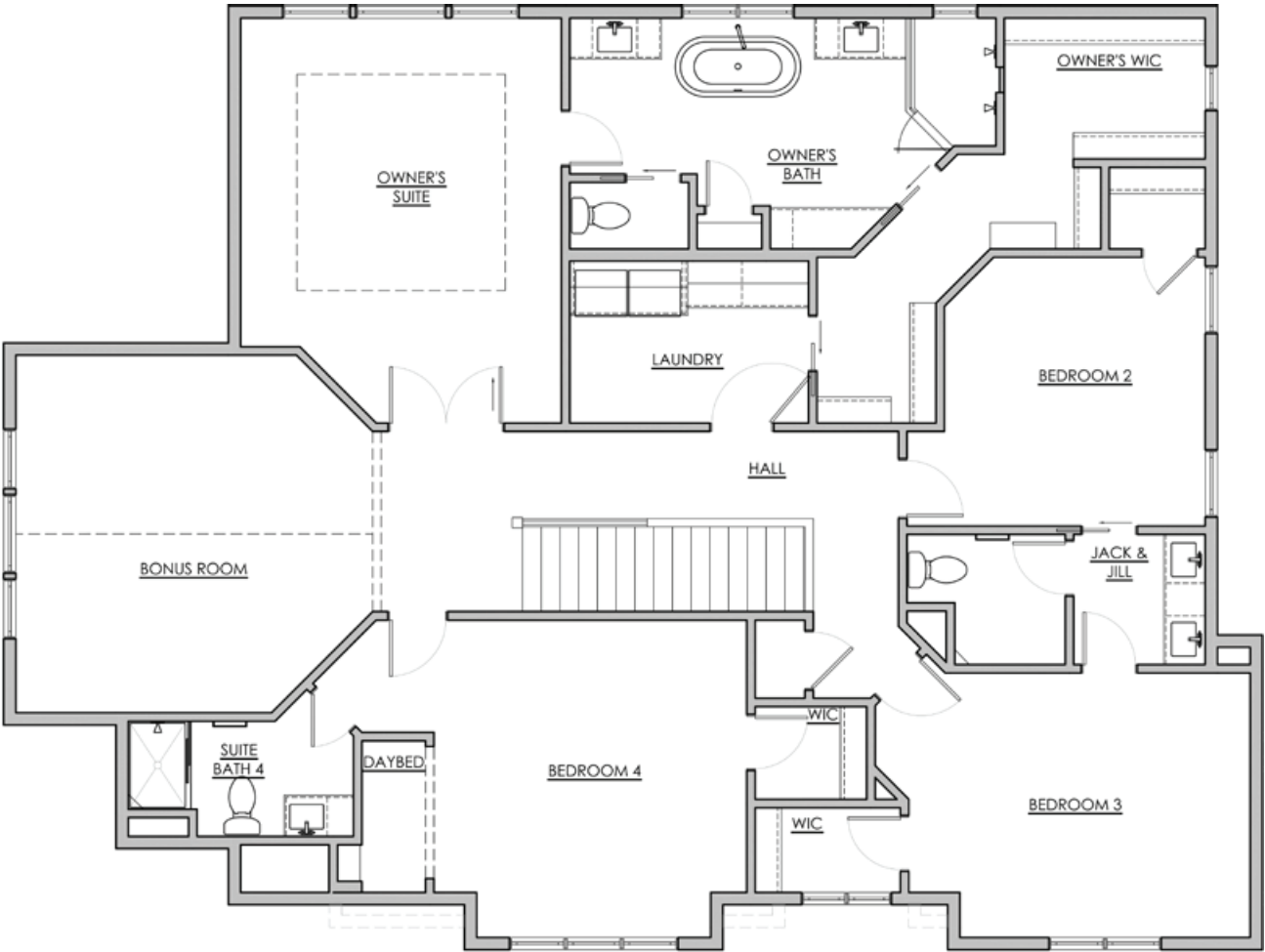


*NOTE: Plan dimensions and square footage numbers are approximate, actual plans may vary slightly.

Upper Level

1,835 FINISHED SF
8' CEILINGS

Bridgewater Sport IDENTITY SERIES



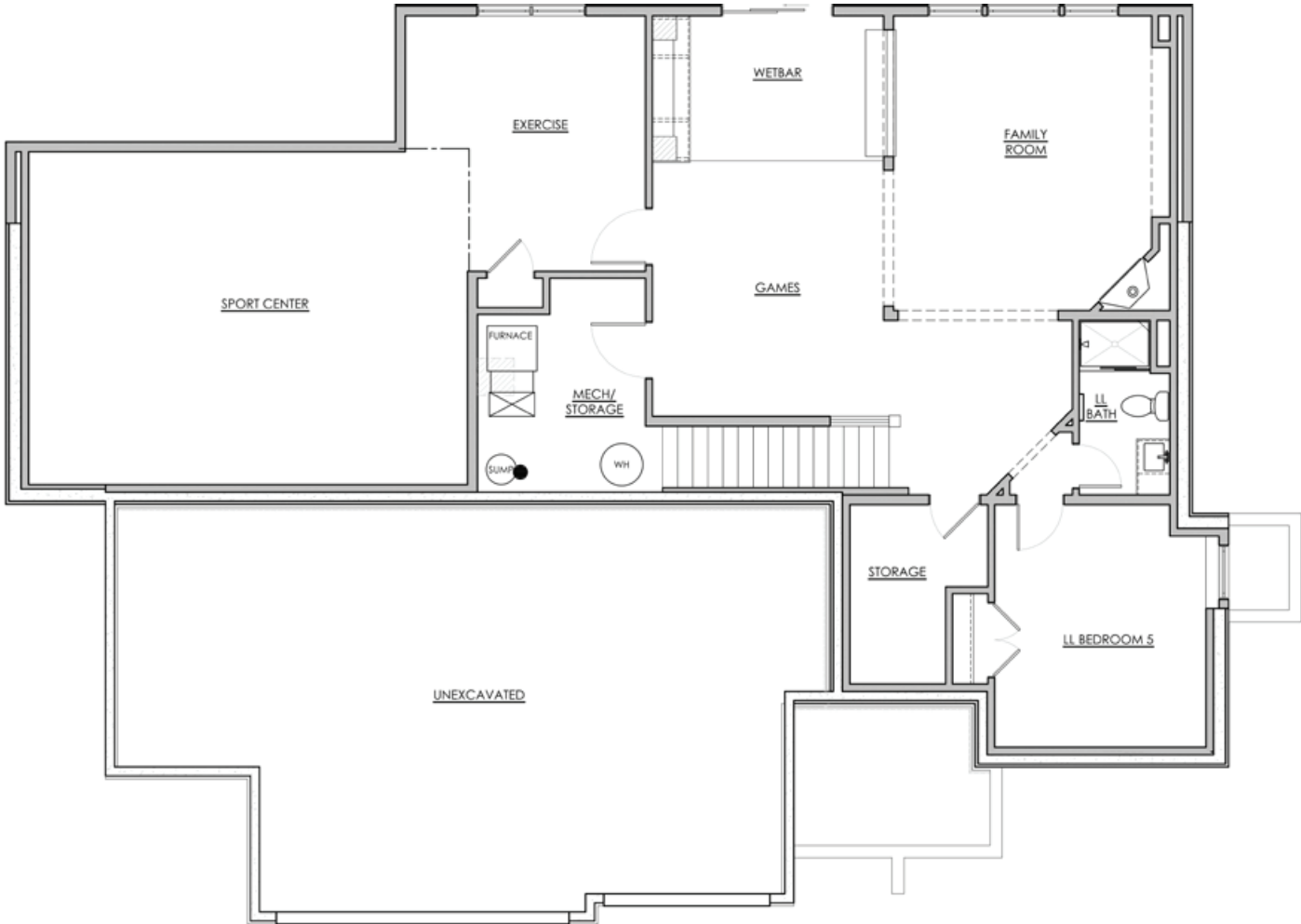
HANSON
■■■ BUILDERS ■■■

*NOTE: Plan dimensions and square footage numbers are approximate, actual plans may vary slightly.

Lower Level

Bridgewater Sport IDENTITY SERIES

1,062 FINISHED SF
702 SPORT CENTER
8' CEILINGS



Upper:	1,835	Garage:	TBD
Main:	1,453	Unfinished:	166
Lower:	1,062		
Sport Center:	702	House Width:	67' - 6"
Total Finished:	5,052 - 5,420		

Opt. Sunroom:	170		
Opt. Bonus:	198		

UPDATED 8/30/2023

*NOTE: Plan dimensions and square footage numbers are approximate, actual plans may vary slightly.



hansonbuilders.com | 763-286-2509

© Copyright Hanson Companies, LLC. Note: the floor plans and elevations of all Hanson Builder, Inc. Homes are copyrighted. Our copyrights have been enforced and will continue to be enforced. These plans may not be given to or used by any other person or company without written permission. Specifications subject to change without notice. All plans are shown as concepts with some "Artistic license used." These drawings are not intended to show exact construction plans. Hanson Builders 13432 Hanson Blvd., Andover, MN 55304. LIC #BC004568

HANSON
BUILDERS