

Sherwood

LEGACY
SERIES

5 BEDROOM
6 BATHROOM
6,125 FINISHED SF



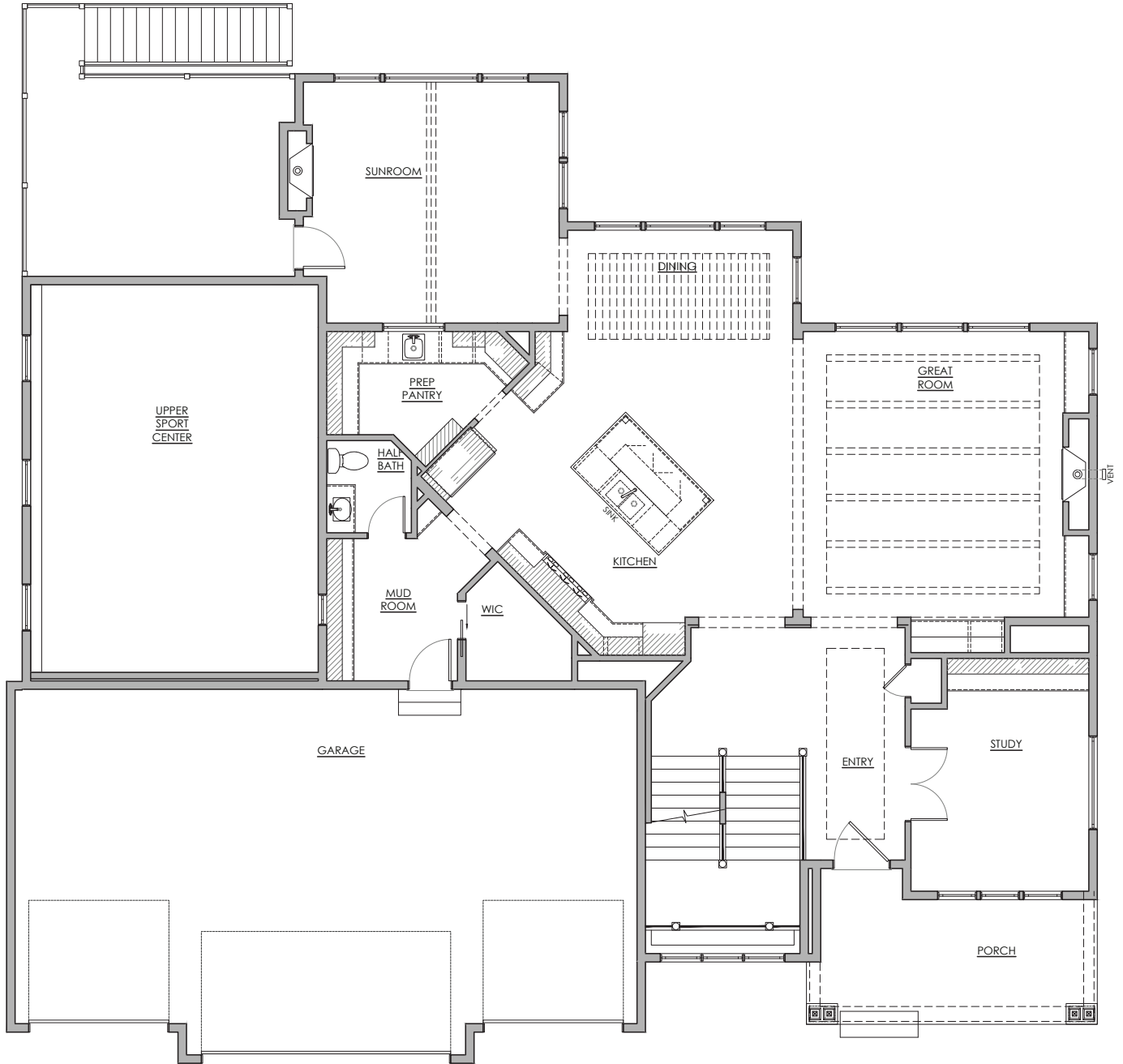
ELEVATION A ■■■■

HANSON
■■■ BUILDERS ■■■

Main Level

Sherwood LEGACY SERIES

1,991 FINISHED SF
9' or 10' CEILINGS

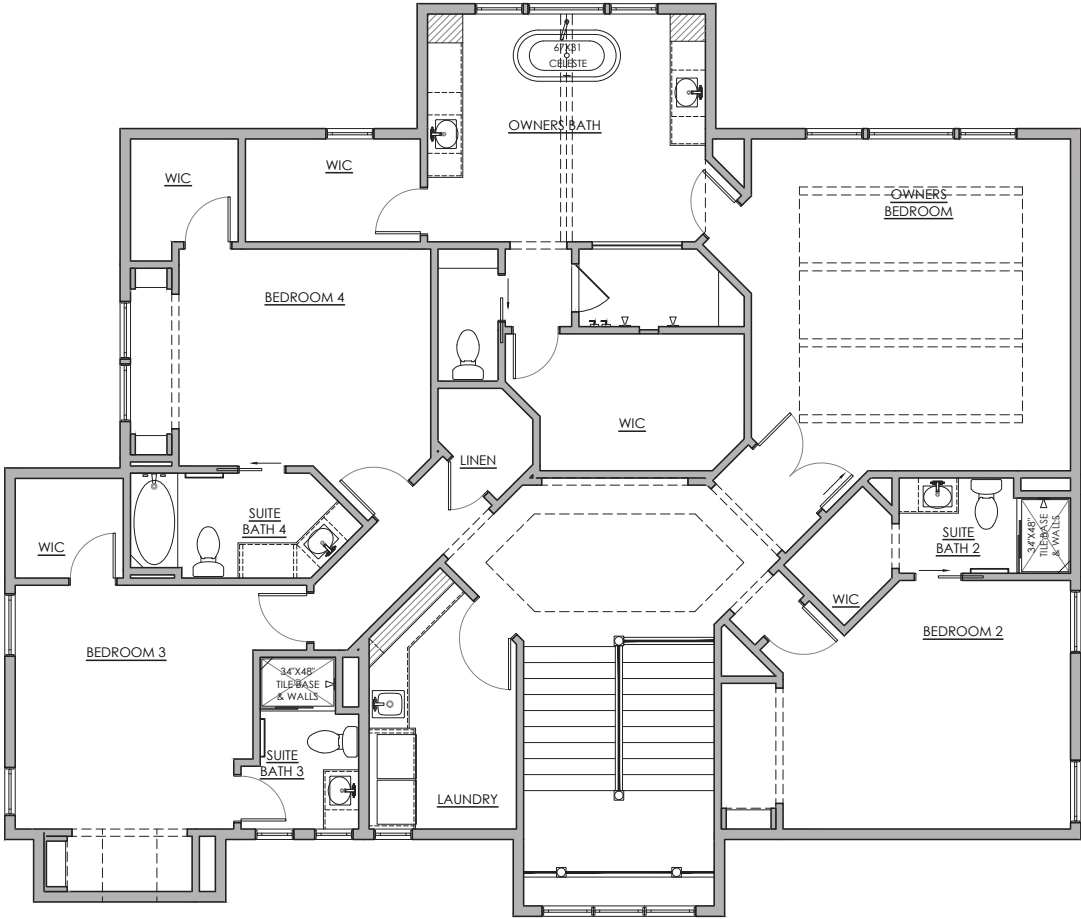


*NOTE: Plan dimensions and square footage numbers are approximate, actual plans may vary slightly.

Upper Level

Sherwood LEGACY SERIES

2,144 FINISHED SF
8' CEILINGS

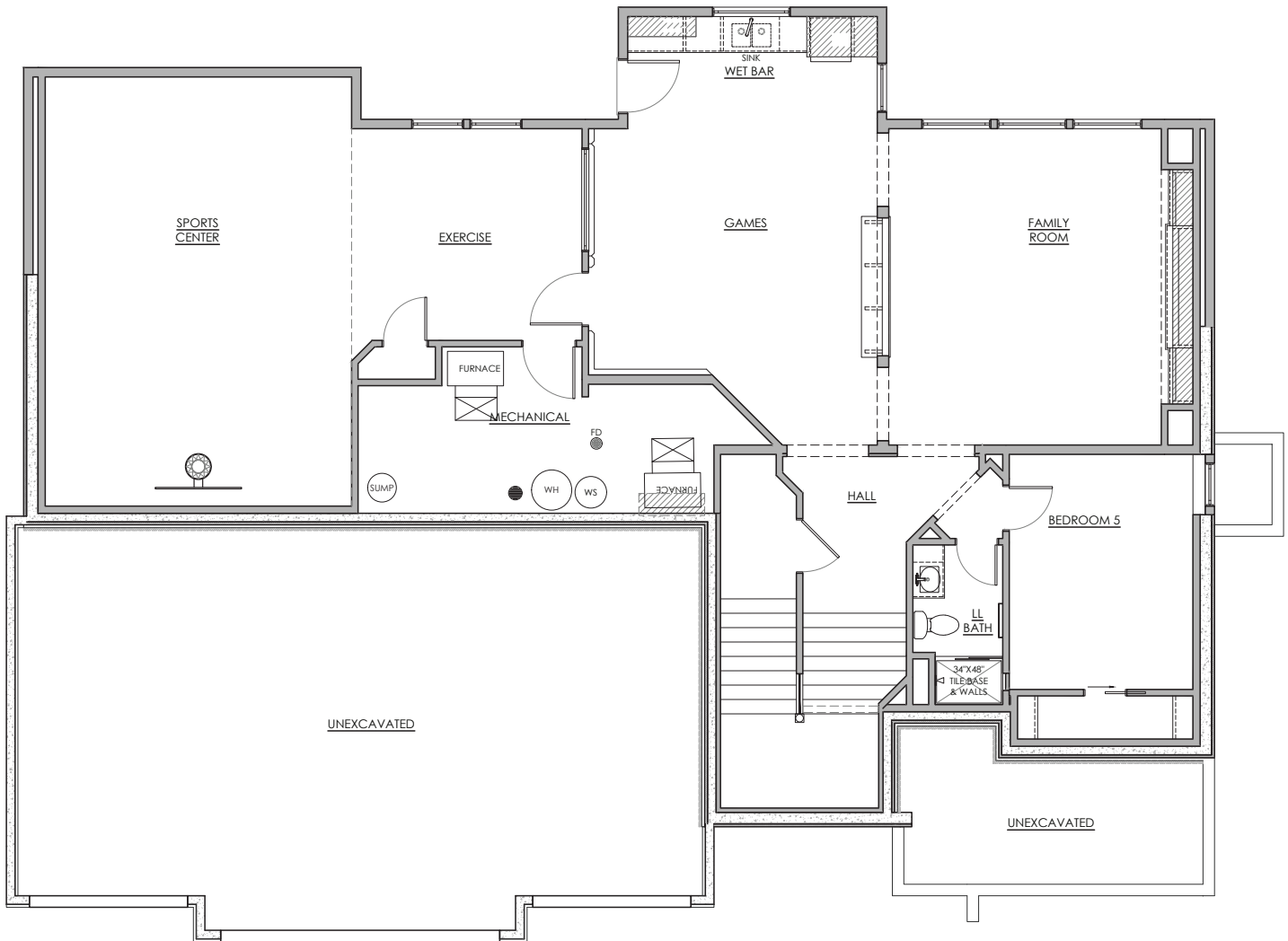


HANSON
BUILDERS

*NOTE: Plan dimensions and square footage numbers are approximate, actual plans may vary slightly.

Lower Level

1,294 FINISHED SF
8' or 9' CEILINGS



UPDATED 3/7/2024

*NOTE: Plan dimensions and square footage numbers are approximate, actual plans may vary slightly.

Upper:	2,144	Garage:	931
Main:	1,991	Unfinished:	222
Lower:	1,294		
Sport Center:	696	House Width:	70' - 0"
Total Finished:	6,125		



hansonbuilders.com | 763-286-2509

© Copyright Hanson Companies, LLC. Note: the floor plans and elevations of all Hanson Builder, Inc. Homes are copyrighted. Our copyrights have been enforced and will continue to be enforced. These plans may not be given to or used by any other person or company without written permission. Specifications subject to change without notice. All plans are shown as concepts with some "Artistic license used." These drawings are not intended to show exact construction plans. Hanson Builders 13432 Hanson Blvd., Andover, MN 55304. LIC #BC004568