

Vail 3

VILLA
SERIES

3 - 5 BEDROOM
3 BATHROOM
2,493 - 2,737 FINISHED SF



ELEVATION B ■■■■



ELEVATION A ■■■■

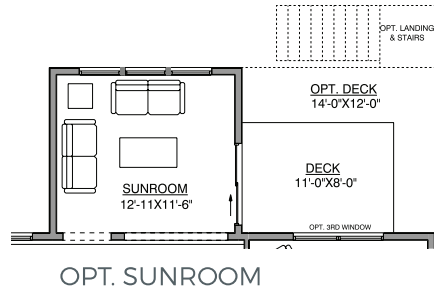


ELEVATION C ■■■■

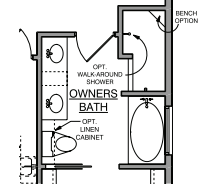
HANSON
■■■ BUILDERS ■■■

Main Level

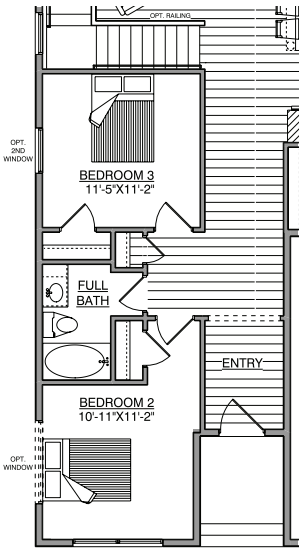
1,730 FINISHED SF
9' CEILINGS



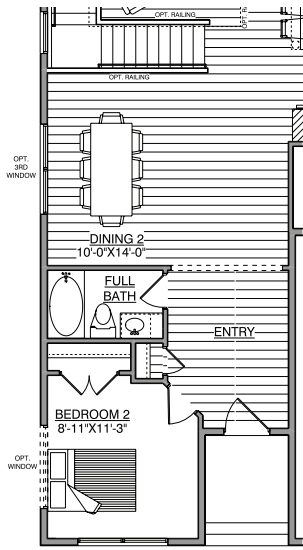
OPT. SUNROOM



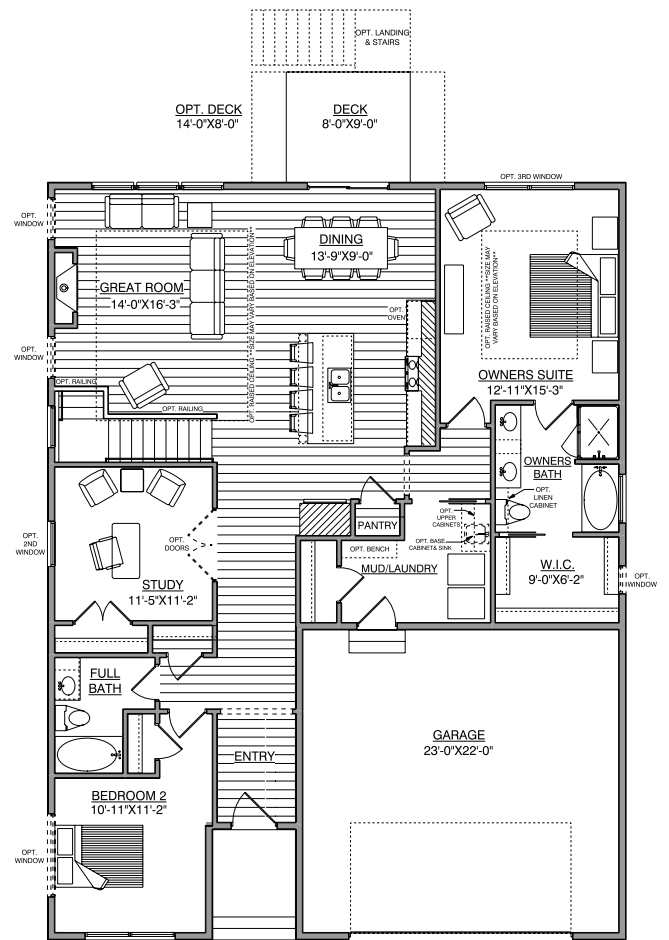
SHOWER OPTION



3 BEDROOM OPTION



DINING 2 OPTION

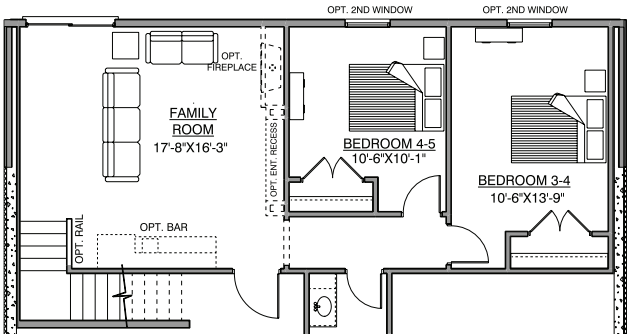


*NOTE: Plan dimensions and square footage numbers are approximate, actual plans may vary slightly.

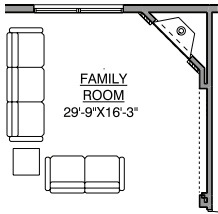
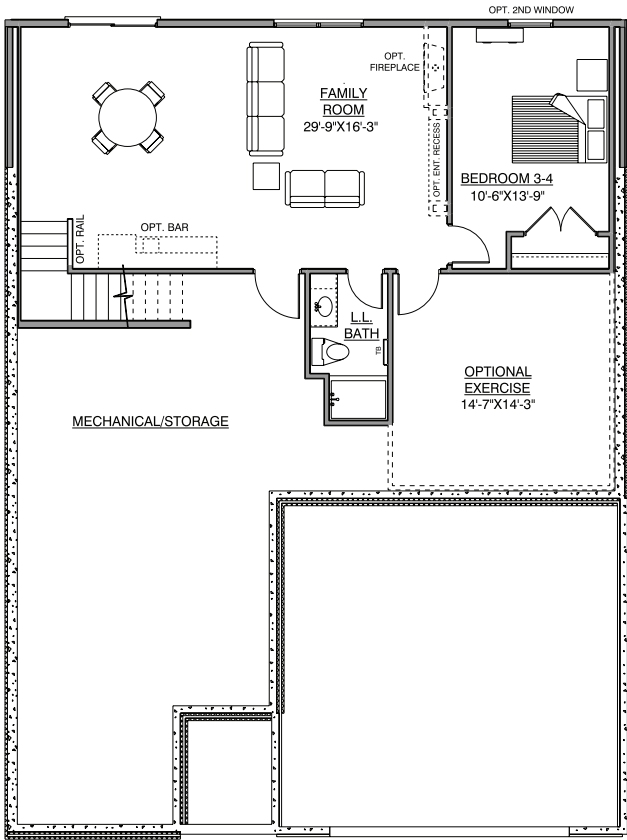
Lower Level

Vale 3 VILLA SERIES

763 - 1,007 FINISHED SF
8' CEILINGS



OPT. BEDROOM 3-5



OPT. CORNER FIREPLACE

Main:	1,730	Garage:	539
Lower:	763	Unfinished:	966
		House Width:	42' - 0"
Total Finished:	2,493 - 2,737		

Opt. Exercise:	244		
-----------------------	-----	--	--

*NOTE: Plan dimensions and square footage numbers are approximate, actual plans may vary slightly.

UPDATED 4/20/2021

*NOTE: Plan dimensions and square footage numbers are approximate, actual plans may vary slightly.



hansonbuilders.com | 763-286-2509

© Copyright Hanson Companies, LLC. Note: the floor plans and elevations of all Hanson Builder, Inc. Homes are copyrighted. Our copyrights have been enforced and will continue to be enforced. These plans may not be given to or used by any other person or company without written permission. Specifications subject to change without notice. All plans are shown as concepts with some "Artistic license used." These drawings are not intended to show exact construction plans. Hanson Builders 13432 Hanson Blvd., Andover, MN 55304. LIC #BC004568

HANSON
■■■ BUILDERS ■■■