

Hillcrest Sport

IDENTITY
SERIES

4 - 5 BEDROOM
5 BATHROOM
4,414 FINISHED SF



ELEVATION A ■ ■ ■ ■



ELEVATION B ■ ■ ■ ■



ELEVATION C ■ ■ ■ ■



ELEVATION D ■ ■ ■ ■



ELEVATION E ■ ■ ■ ■



ELEVATION F ■ ■ ■ ■



ELEVATION G ■ ■ ■ ■



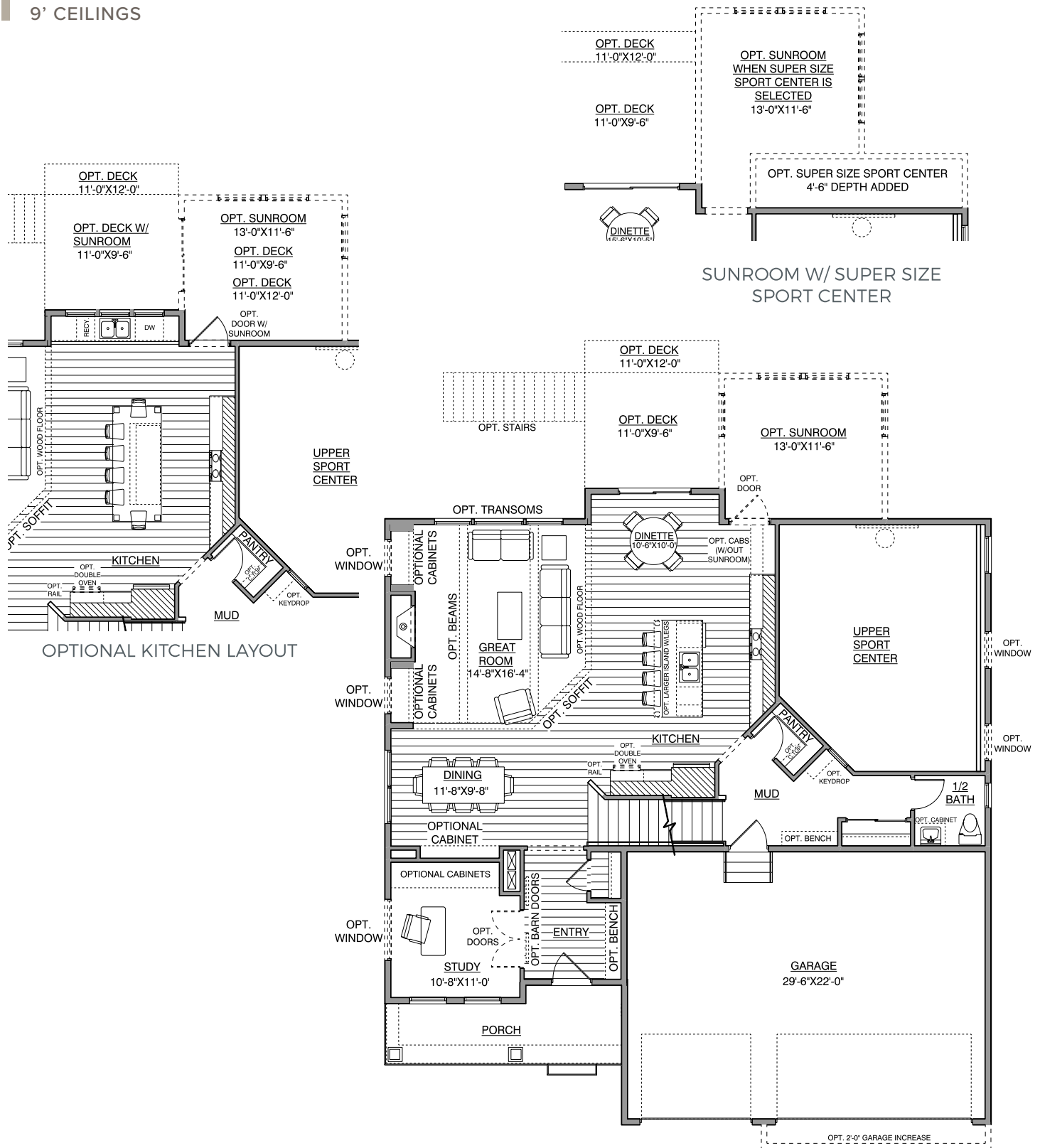
ELEVATION H ■ ■ ■ ■

HANSON
■ ■ ■ BUILDERS ■ ■ ■

Main Level

1,291 - 1,461 FINISHED SF
9' CEILINGS

Hillcrest Sport IDENTITY SERIES



*NOTE: Plan dimensions and square footage numbers are approximate, actual plans may vary slightly.

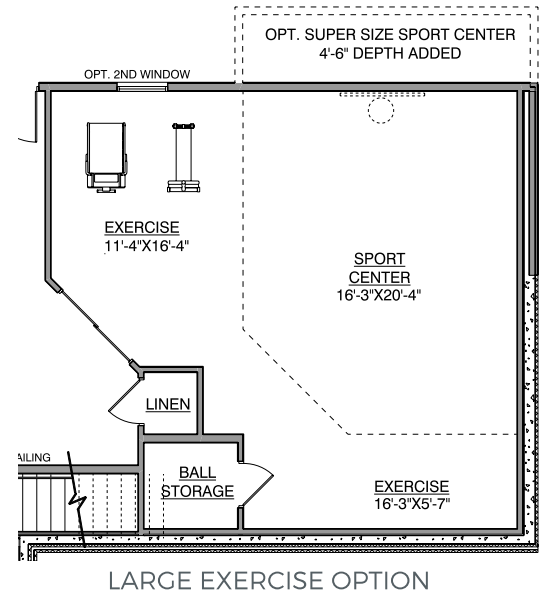
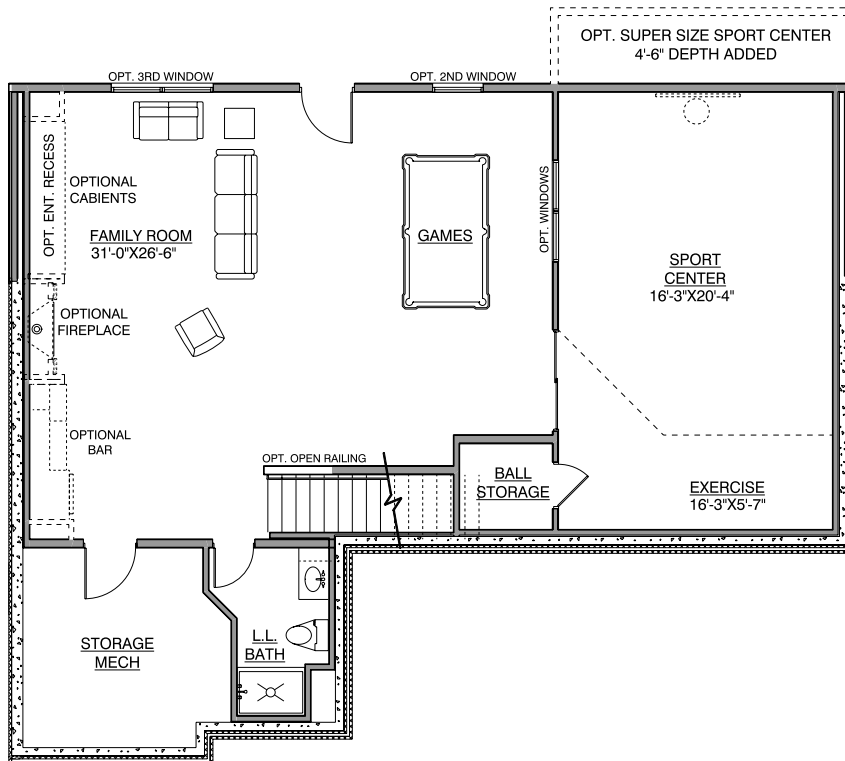
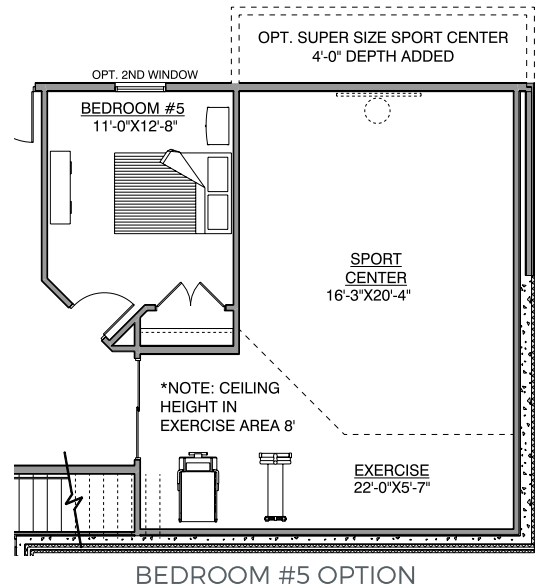
Lower Level

883 FINISHED SF
530 SPORT CENTER
8' CEILINGS

Upper:	1,710	Garage:	681
Main:	1,291	Unfinished:	200
Lower:	883		
Sport Center:	530		
Total Finished:	4,414		

Opt. Sunroom:	170		
Opt. Bonus:	128		
Opt. Sport Add:	80	House Width:	50' - 0"

Hillcrest Sport IDENTITY SERIES



UPDATED 10/17/2023

*NOTE: Plan dimensions and square footage numbers are approximate, actual plans may vary slightly.



hansonbuilders.com | 763-286-2509

© Copyright Hanson Companies, LLC. Note: the floor plans and elevations of all Hanson Builder, Inc. Homes are copyrighted. Our copyrights have been enforced and will continue to be enforced. These plans may not be given to or used by any other person or company without written permission. Specifications subject to change without notice. All plans are shown as concepts with some "Artistic license used." These drawings are not intended to show exact construction plans. Hanson Builders 13432 Hanson Blvd., Andover, MN 55304. LIC #BC004568

HANSON
BUILDERS