

Windom IDENTITY SERIES

5 - 6 BEDROOM
5 BATHROOM
3,860 - 4,001 FINISHED SF



ELEVATION C ■■■■



ELEVATION A ■■■■



ELEVATION B ■■■■



ELEVATION D ■■■■



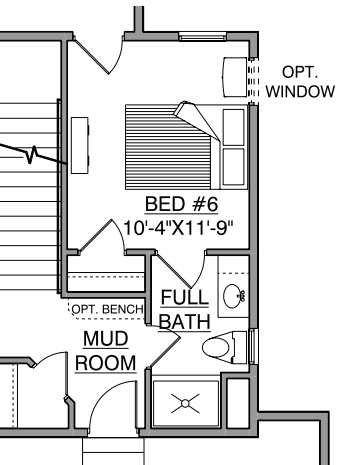
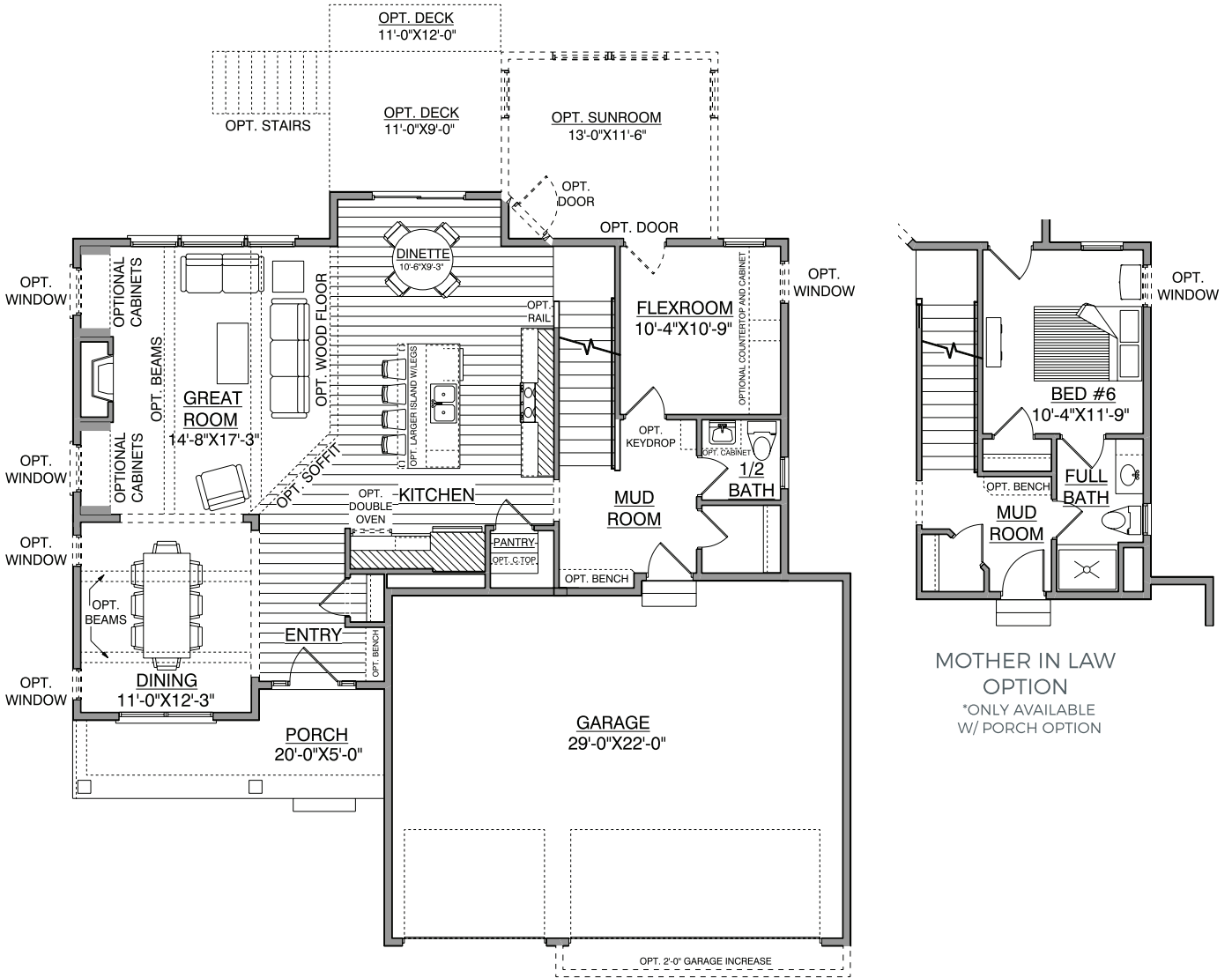
ELEVATION E ■■■■

HANSON
■■■ BUILDERS ■■■

Main Level

Windom IDENTITY SERIES

1,231 - 1,372 FINISHED SF
9' CEILINGS



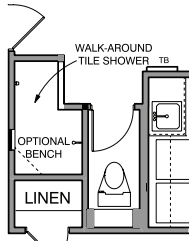
MOTHER IN LAW
OPTION
*ONLY AVAILABLE
W/ PORCH OPTION

*NOTE: Plan dimensions and square footage numbers are approximate, actual plans may vary slightly.

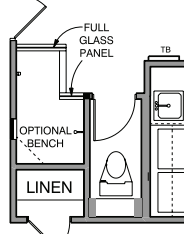
Upper Level

Windom IDENTITY SERIES

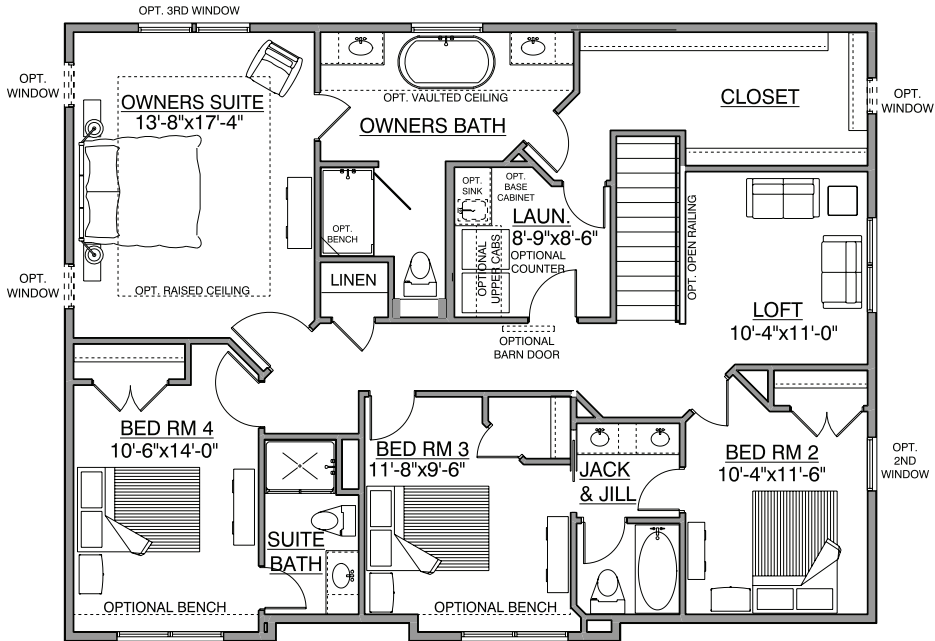
1,588 FINISHED SF
8' CEILINGS



WALK-AROUND SHOWER OPTION 1



WALK-AROUND SHOWER OPTION 2

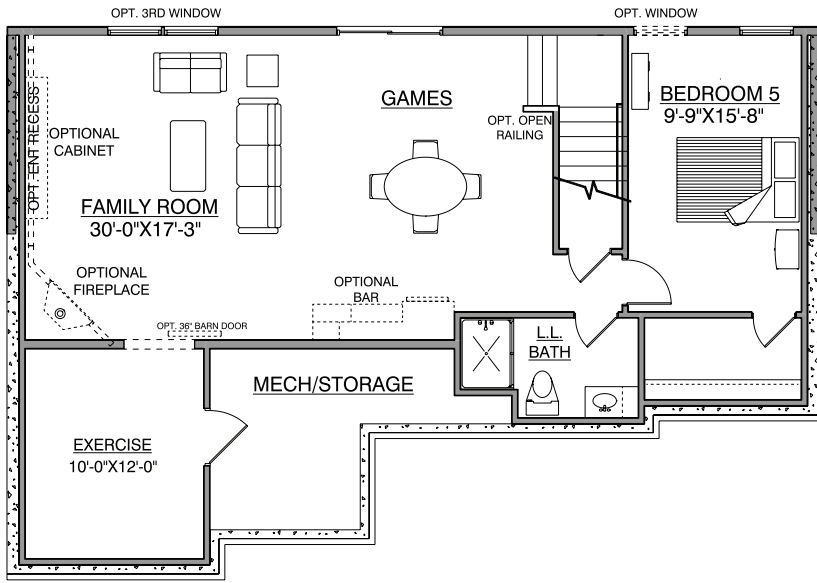


*UPPER FLOOR VARIES PER ELEVATION

*NOTE: Plan dimensions and square footage numbers are approximate, actual plans may vary slightly.

Lower Level

1,041 FINISHED SF
8' CEILINGS



| | | | |
|------------------------|-------|---------------------|----------|
| Upper: | 1,588 | Garage: | 657 |
| Main: | 1,231 | Unfinished: | 154 |
| Lower: | 1,041 | House Width: | 50' - 0" |
| Total Finished: | 3,860 | | |

| | | | |
|----------------------|-----|--|--|
| Opt. Sunroom: | 141 | | |
|----------------------|-----|--|--|

UPDATED 12/29/2022

*NOTE: Plan dimensions and square footage numbers are approximate, actual plans may vary slightly.